



**SUZUKI**  
**MARINE**

Parts Book  
DT 5 (78-79)

**PREFACE**

This parts catalogue has been arranged to include all prior modification as the final edition.

No revised edition will be issued any more and be sure to make use of this in good keeping.

Upon receipt of this final edition, the old catalogue should be thrown away.

This parts catalogue covers the list of all service parts for SUZUKI DT2~DT9 (C, D, F).

**A. INSTRUCTIONS FOR QUOTING THE CATALOGUE**

**1. DIMENSIONS**

Dimensions of the parts in this catalogue are indicated in unit millimeters.

**2. ABBREVIATIONS**

Abbreviations used in this catalogue are as follows:

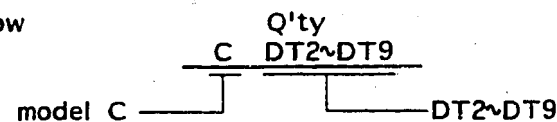
AR	: As required	NT	: Number of teeth
ASSY	: Assembly	OPT	: Optional
E.No.	: Engine Number	OS	: Over Size
F.No.	: Frame Number	STD	: Standard
d	: Diameter of material	T	: Thickness
ID	: Inside diameter	US	: Under size
OD	: Outside diameter	W	: Width
L	: Length	S,L,UL,LL	: Transom type
LH	: Left hand side		
RH	: Right hand side		
~100045	: Up to F.No.-100045		
100046~	: From F.No.-100046		

12 x 34 x 5.6 ..... Figures in the description column show the dimensions of parts.  
|     |     |  
ID   OD   T(or W,L)

To 12340-56781 (Parts No.) : indicates that the parts number was changed to 12345-56781 and the new parts are interchangeable with the former ones but the former ones are not interchangeable with new ones.

From 12345-56781 (Parts No.) : indicates that the former and new parts are interchangeable with each other and both are usable.

The number of letter shown below Q'ty indicate the MODEL NAME as shown right side.



**3. INNER PARTS OF ASSEMBLY**

Parts number that have a period (.) mark in front of the part description on a text page are separately serviced parts of the assembly.

**4. MODIFICATION NOTICE**

A parts bulletin will be sent to you on all occasions when changes in parts occur, including interchangeable modifications between new parts and old ones.

**5. NOTE**

5-1. There are some different parts from those of production models among spare parts for the administrative reasons and common use of them with other models.

5-2. In respect of rubber hoses and vinyl tubes, please be sure to use them by cutting off according to the length mentioned on parts catalogue or what is actually required on the vehicle.

5-3. Note that the drawings on the illustration page are for ready reference of spare parts number, not to be used as an assembly manual.  
When assembling, use "SUZUKI SERVICE MANUAL".

**6. SPECIFICATION CODE**

This catalogue contains the parts for the model designed for the following spec. ;  
spec. code: DT2C (E1, E28), DT2D (E1), DT2F (E1), DT3.5F (E1, E16)  
DT4.5C (E1, E28), DT4D (E1), DT5D (E1, E3, E13),  
DT5F (E1, E3, E13)  
DT7.5C (E1, E13, E28), DT7.5D (E1, E13),  
DT7.5F (E1, E9, E13)  
DT9C (E1, E13, E28, E37), DT9D (E1, E13),  
DT9F (E1, E9, E13)

**7. SERIAL FRAME NUMBER**

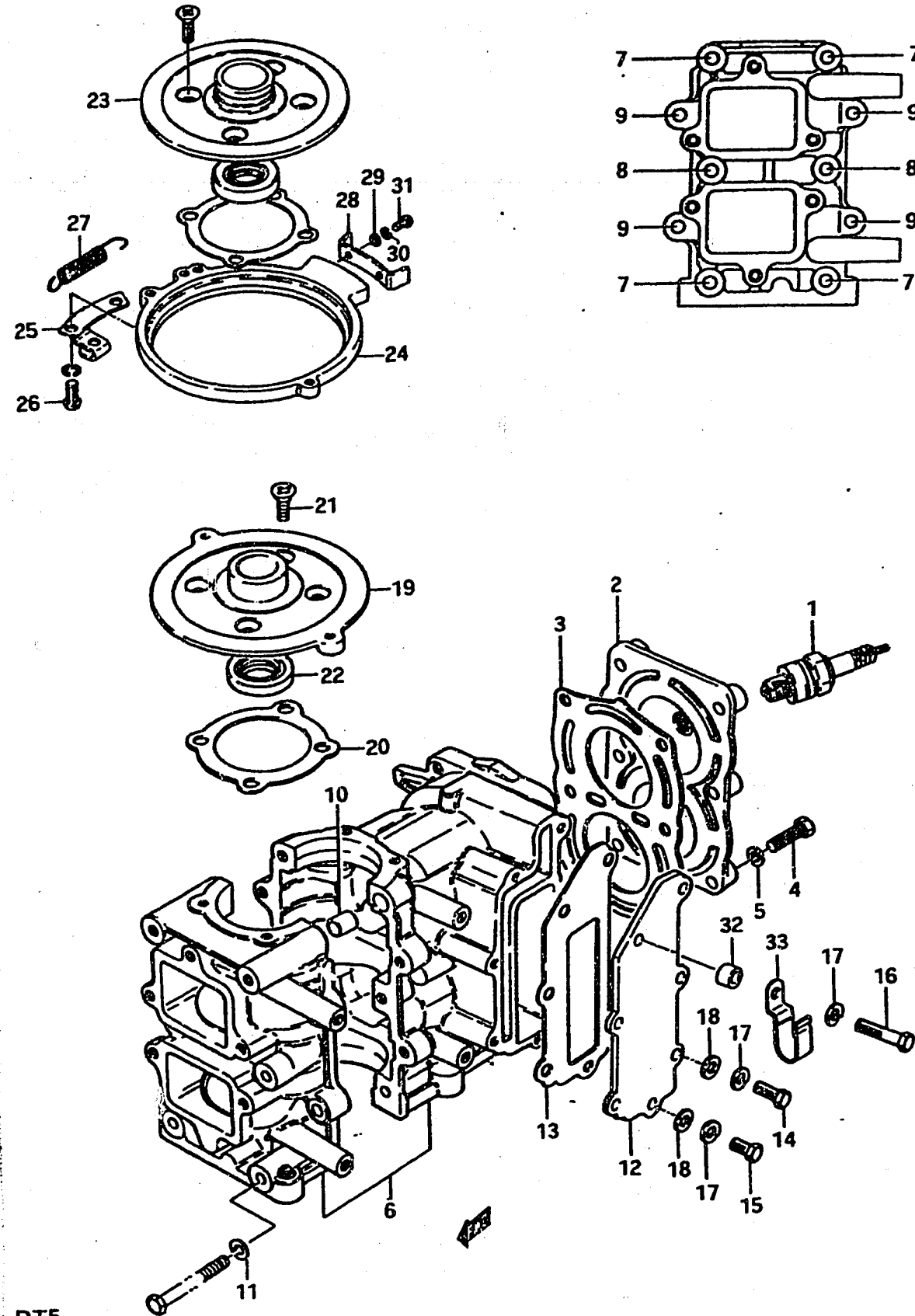
C-10001~, D-10001~, F-10001~

FIG. 50

G - 3

1

FIG. 50 CYLINDER

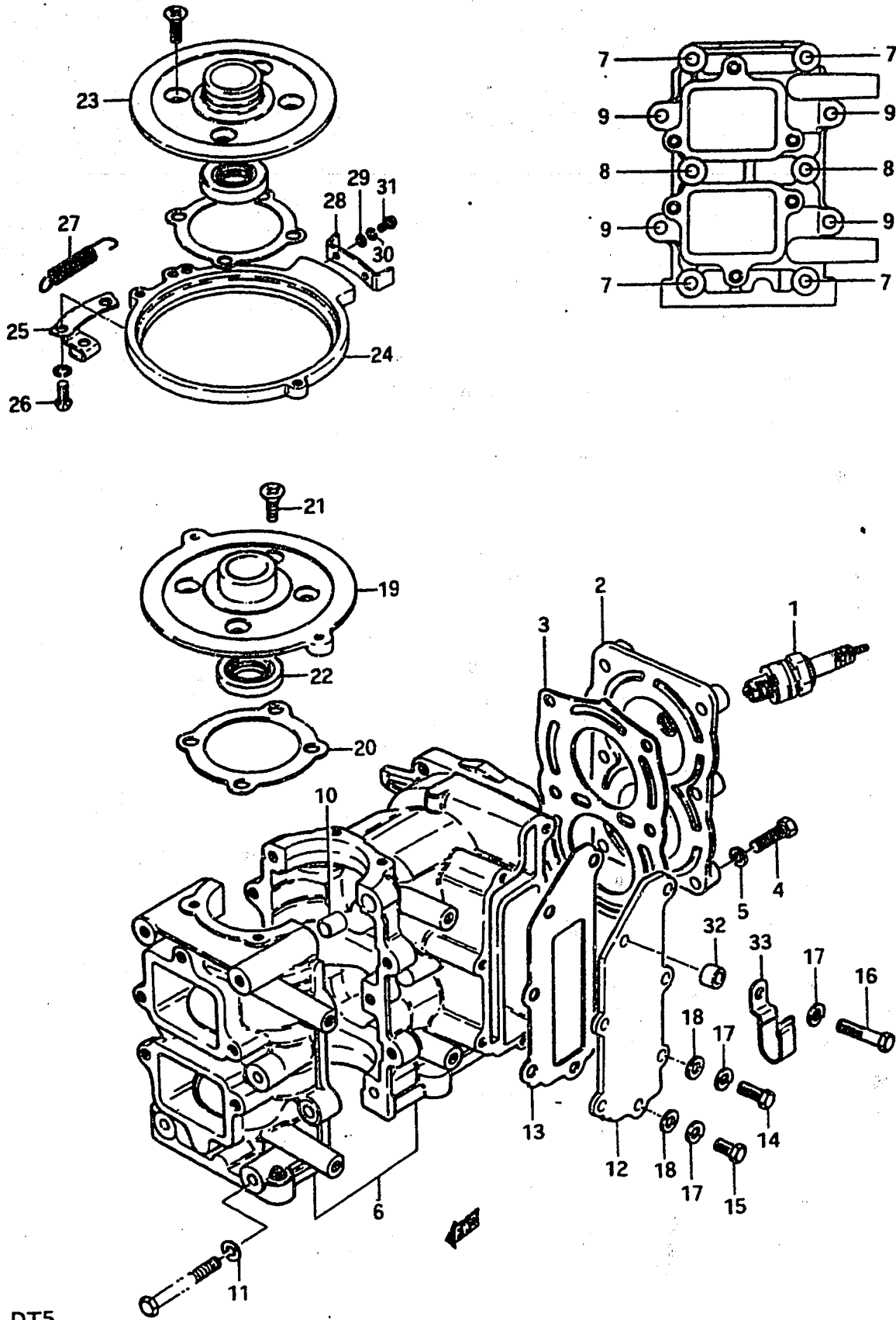


Ref. No.	Part No.	Description	Q'ty		Remarks
			D	F	
1-1	09482-00141	SPARK PLUG ASSY	2	2	BPR6HS,NGK
1-2	09482-00084	SPARK PLUG ASSY	2	2	E13,BP6HS,NGK
2-1	11111-98500-01J	CYLINDER HEAD	1	-	to 11111-98501-01J
2-2	11111-98501-01J	CYLINDER HEAD	-	1	
3	11141-98500	GASKET, cylinder head	1	1	
4-1	01107-06308	BOLT, cylinder head	6	-	
4-2	09100-06090	BOLT, cylinder head (6x30)	-	6	
5	08321-21068	LOCK WASHER	6	6	
6-1	11300-98850-01J	CYLINDER SET	1	-	
		to (11300-98851-01J)+(14151-98502)+(14141-98501-01J)+(01107-06168)			
		+(08321-21068)+(08322-21068)			
6-2	11300-98851-01J	CYLINDER SET	1	1	DT5D-17839~
7	01107-06608	•BOLT 1	4	4	
8	01107-06508	•BOLT 2	2	2	
9	01107-06308	•BOLT 3	4	4	
10	04211-09109	•DOWEL PIN	2	2	
11	08321-21068	•LOCK WASHER	10	10	
12-1	14141-98500-01J	COVER, exhaust	1	-	
12-2	14141-98501-01J	COVER, exhaust	1	1	to 14141-98502-01J
12-3	14141-98502-01J	COVER, exhaust	-	1	
13-1	14151-98500	GASKET, exhaust cover	1	-	to 14151-98501
13-2	14151-98501	GASKET, exhaust cover	1	-	
13-3	14151-98502	GASKET, exhaust cover	1	1	
14	01107-06208	BOLT	6	5	
15	01107-06168	BOLT	-	1	
16	01107-06308	BOLT	-	1	
17	08321-21068	LOCK WASHER	6	7	
18	08322-21068	WASHER	-	6	

FIG. 50

G - 4

FIG. 50 CYLINDER



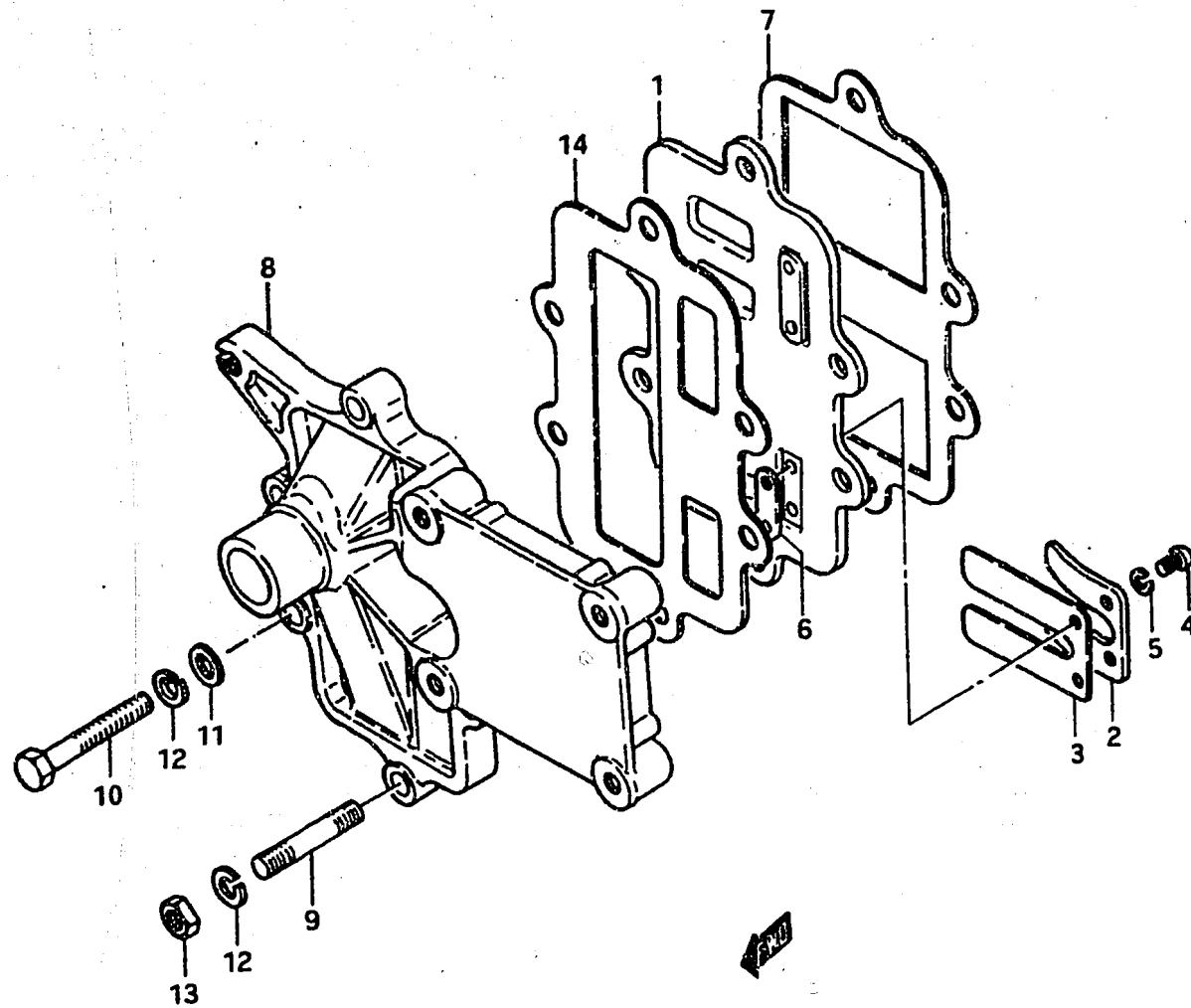
Ref. No.	Part No.	Description	Q'ty		Remarks
			D	F	
19	11411-98510-01J	HOUSING, upper oil seal	1	1	
20	11413-98500	GASKET	1	1	
21	02122-06168	SCREW	4	4	
22	09283-20006	OIL SEAL, upper crank shaft	1	1	
23	11411-98500	HOUSING, upper oil seal	1	1	E3
24	19151-98500-01J	RETAINER, stator	1	1	
25	19152-98500	BRACKET, retainer	1	1	
26	02112-05128	SCREW	2	2	
27	09443-09009	SPRING, retainer	1	1	
28	19172-98500	STOPPER, retainer	1	1	
29	08322-21058	WASHER	2	2	
30	08321-21058	LOCK WASHER	2	2	
31	02112-05128	SCREW	2	2	
32	09180-06030	SPACER	-	1	
33	09403-06307	CLAMP, high tension cord	-	1	

FIG.51

G - 5

3

FIG.51 REED VALVE



Ref. No.	Part No.	Description	Q'ty		Remarks
			D	F	
1	13150-98500	VALVE ASSY, reed	1	1	
2	13152-19010	·STOPPER, reed valve	2	2	
3	13153-19012	·VALVE, reed	2	2	
4	02112-03088	·SCREW	4	4	
5	08321-21038	·LOCK WASHER	4	4	
6	13154-98500	·PLATE, reed valve	2	2	
7	13122-98500	GASKET, valve seat	1	1	
8	12481-98500-01J	CASE, inlet	1	1	
9	01411-06258	STUD BOLT	4	4	
10	01107-06308	BOLT, inlet	2	2	
11	08322-21068	WASHER	-	2	
12	08321-21068	LOCK WASHER	6	6	
13	08310-11068	NUT	4	4	
14	13121-98500	GASKET, inlet	1	1	

FIG. 52

G - 6

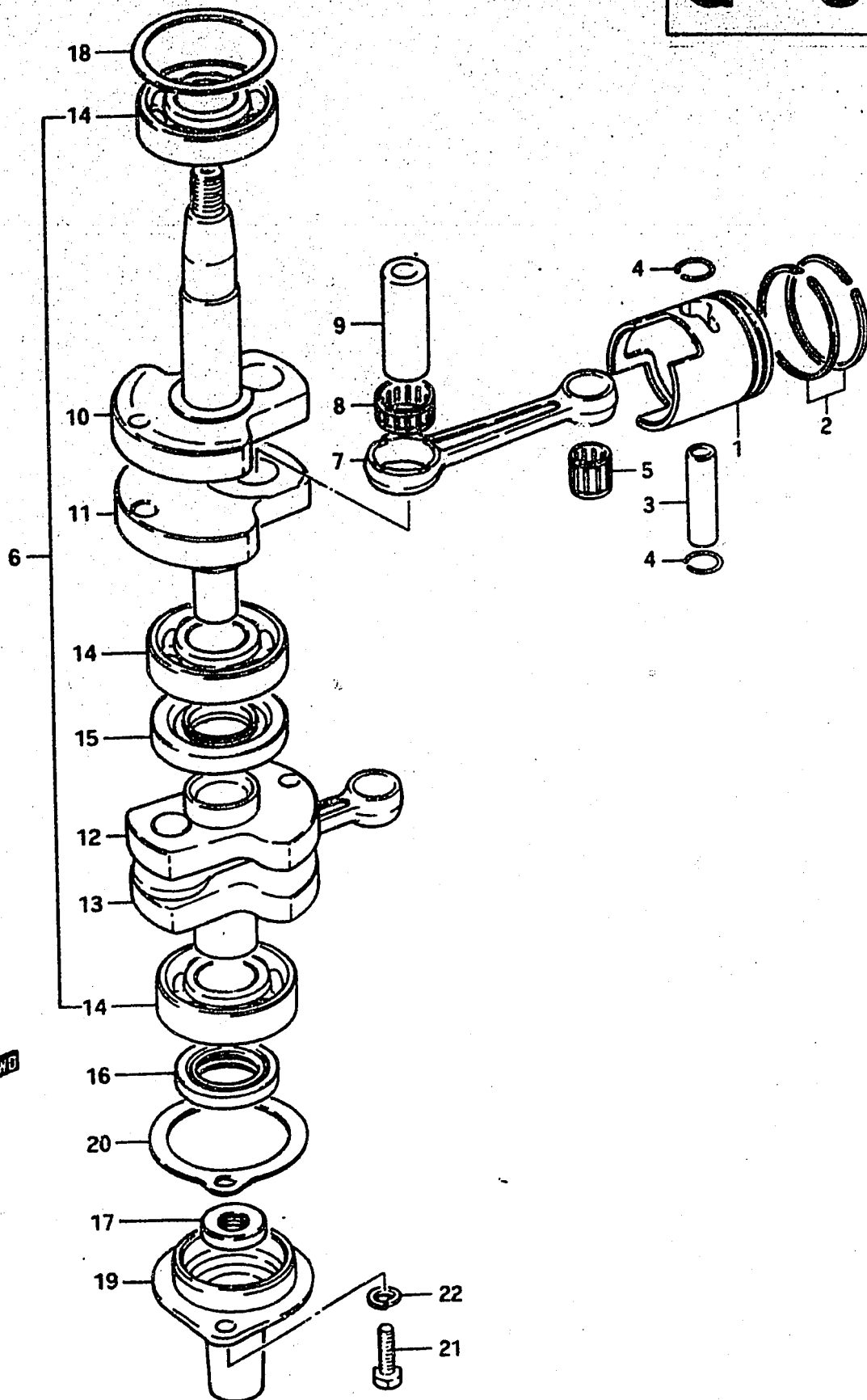


FIG. 52 CRANKSHAFT

Ref. No.	Part No.	Description	Q'ty		Remarks
			D	F	
1-1	12110-98500	PISTON	2	2	
1-2	12110-98500-025	PISTON	2	2	OS:0.25,OPT
1-3	12110-98500-050	PISTON	2	2	OS:0.5,OPT
2-1	12140-36232	RING SET, piston	2	2	from 12140-36231
2-2	12140-98501-025	RING SET, piston	2	2	OS:0.25,OPT from 12140-98500-025
2-3	12140-36232-050	RING SET, piston	2	2	OS:0.5,OPT from 12140-36752
3	12151-02000	PIN, piston	2	2	
4	09381-12001	CIRCLIP, piston pin	4	4	
5	09263-12003	BEARING (12x16x15.8)	2	2	
6	12200-98501	CRANKSHAFT ASSY	1	1	from 12200-98841
7	12161-35000	•ROD, connecting	2	2	
8-1	09263-16014	•BEARING, crank pin	2	2	
8-2	09263-16016	•BEARING, crank pin	-	2	from 09263-16014
9	12211-98000	•PIN, crank	2	2	
10	12221-98500	•CRANKSHAFT, upper	1	1	
11	12231-98500	•WHEEL, upper crankshaft	1	1	
12	12232-98500	•WHEEL, lower crankshaft	1	1	
13	12240-98500	•CRANKSHAFT, lower	1	1	
14	08113-62040	•BEARING	3	3	
15	09289-22004	•OIL SEAL, middle crankshaft	1	1	
16-1	09283-20022	OIL SEAL, lower crankshaft	1	1	to 09283-20035
16-2	09283-20035	OIL SEAL, lower crankshaft	-	1	
17	09283-10001	OIL SEAL, driveshaft upper	1	1	to 09283-10002
18	09160-35001	SHIM (35x46.5x0.5)	AR(0~1)		
19-1	11431-98500	HOUSING, lower oil seal	1	1	to 11431-98501
19-2	11431-98501	HOUSING, lower oil seal	-	1	F-14915~
20	11433-98500	GASKET, lower oil seal	1	1	
21	09100-06020	BOLT (6x20)	2	2	
22	09162-06001	LOCK WASHER	2	2	

FIG.53

G-7

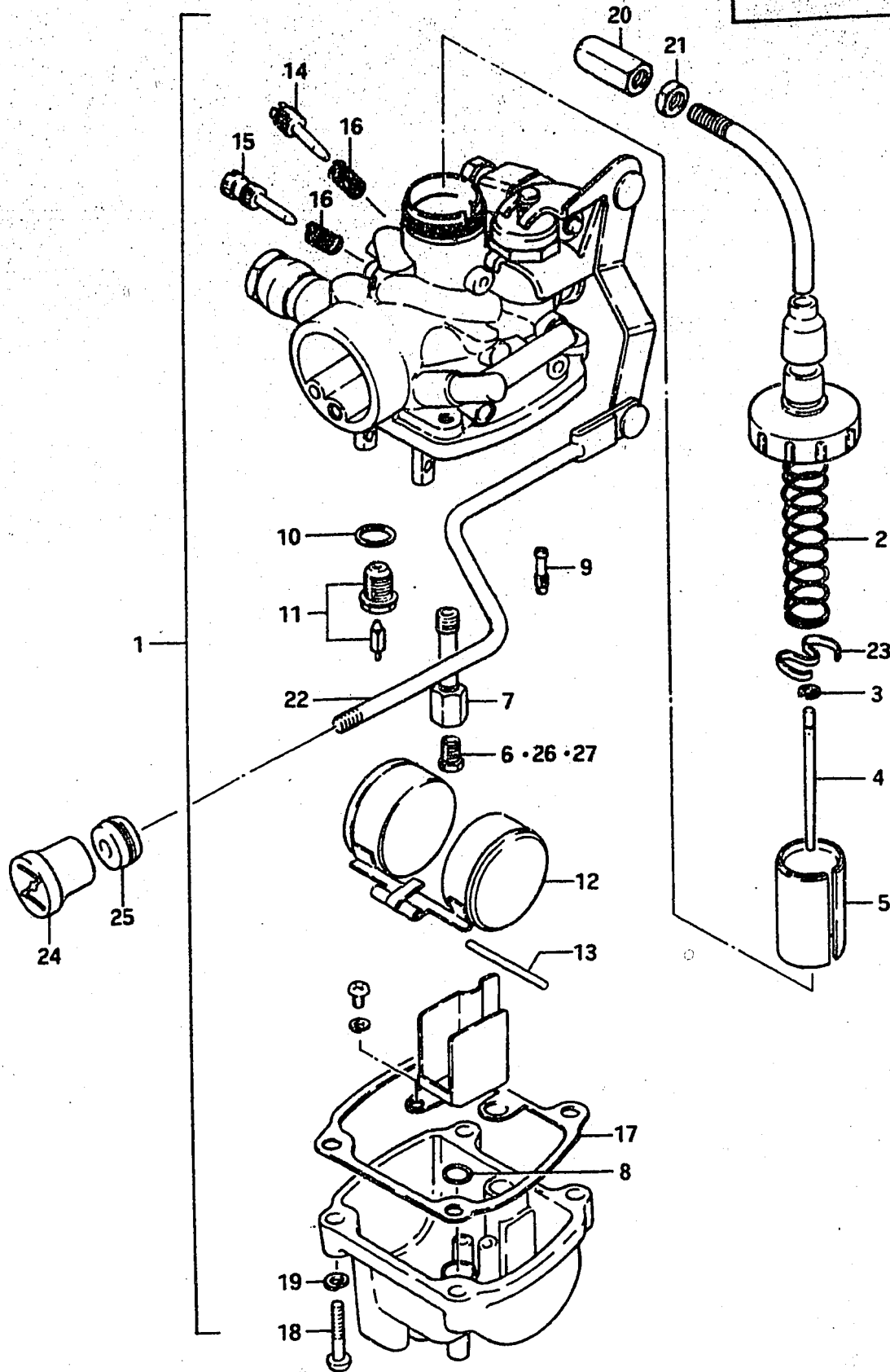


FIG.53 CARBURETOR

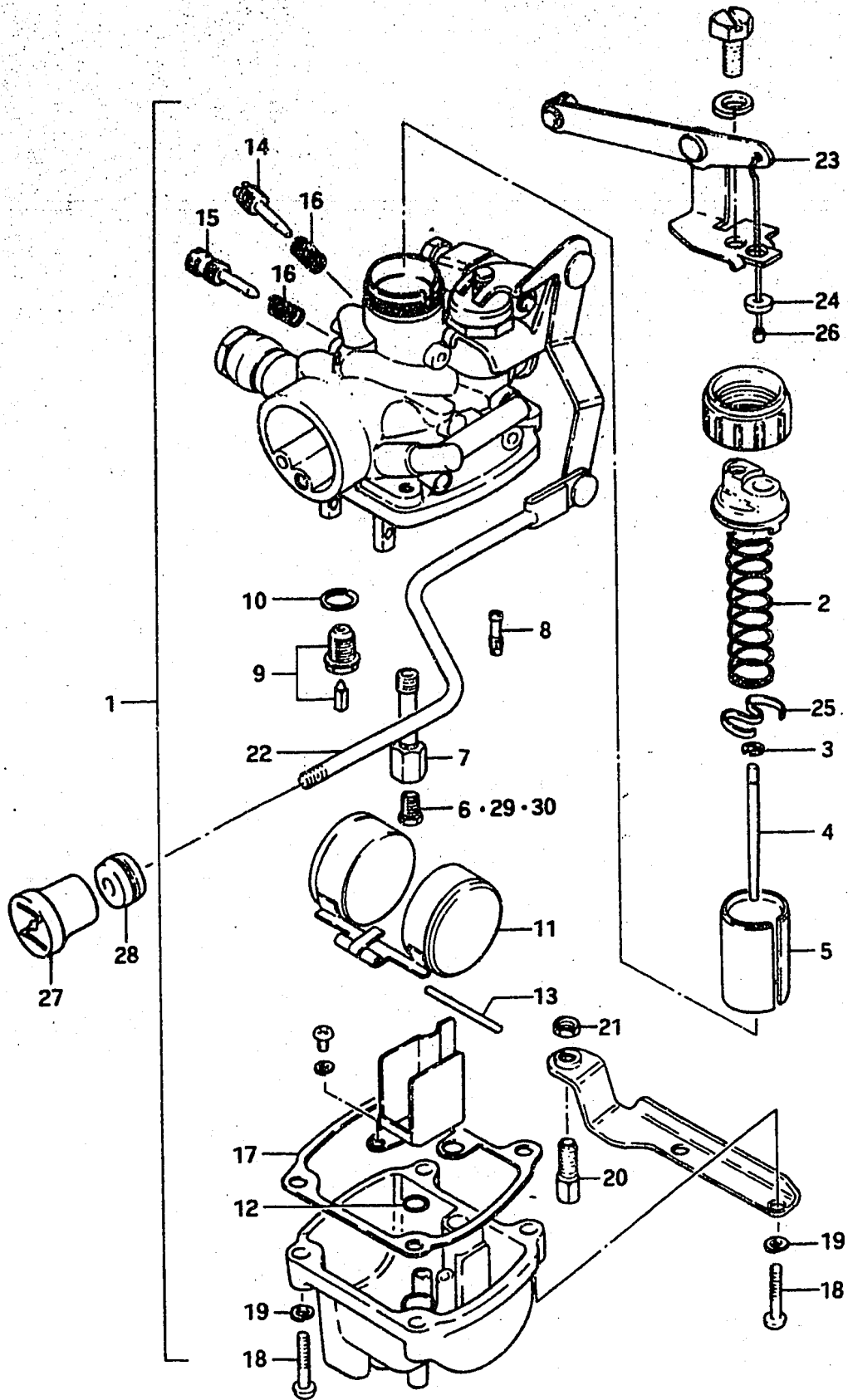
Ref. No.	Part No.	Description	Q'ty		Remarks
			D	F	
1	13200-98510	CARBURETOR ASSY	1	1	stamp:98510
2	13573-98500	•SPRING, throttle valve	1	1	
3	13394-12110	•CLIP, needle	1	1	
4	13383-46160	•NEEDLE, jet	1	1	
5	13551-98500	•VALVE, throttle	1	1	CA:2.0
6	09491-36002	•JET, main	1	1	180
7	09494-00235	•NOZZLE, needle	1	1	
8	13691-98010	•O RING, float chamber	1	1	
9	09492-30003	•JET, pilot	1	1	30
10	13392-01010	•GASKET, valve seat	1	1	
11	13370-96210	•VALVE ASSY, needle	1	1	
12	13252-02010	•FLOAT	1	1	
13	13254-01010	•PIN, float	1	1	
14	13269-01010	•SCREW, pilot air	1	1	
15	13267-93600	•SCREW, throttle stop	1	1	
16	13268-95110	•SPRING, stop screw	2	2	
17	13251-98011	•GASKET, float chamber	1	1	
18	13601-98010	•SCREW	4	4	
19	13571-96110	•LOCK WASHER	4	4	
20	13577-98011	•ADJUSTER, throttle cable	1	1	
21	13661-03010	•NUT, adjusting	1	1	
22	13413-98500	•LEVER, starter	1	1	
23	13581-01010	•SEAT, throttle valve spring	1	1	
24	13631-99002	•KNOB, starter	1	1	to 13631-93500
25	09305-04003	BUSHING, starter guide	1	1	
26	09491-34001	JET, main	1	1	OPT,170
27	09491-38001	JET, main	1	1	OPT,190

FIG.54 (G-8) : E3

FIG. 54

G - 8

FIG. 54 CARBURETOR (E3)



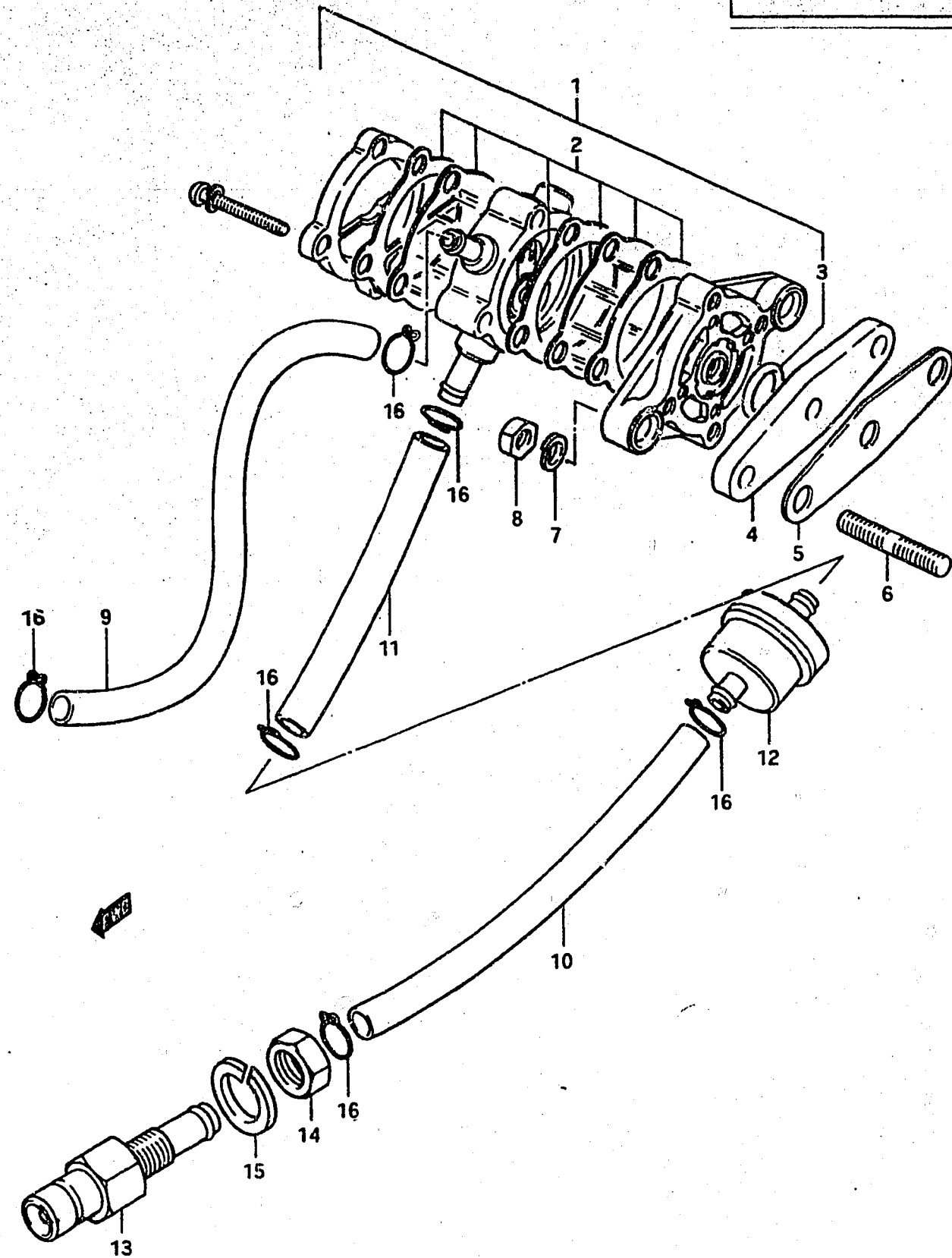
Ref. No.	Part No.	Description	Q'ty		Remarks
			D	F	
1	13200-98500	CARBURETOR (stamp:98500)	1	1	
2	13573-98500	•SPRING, throttle valve	1	1	
3	13394-12110	•CLIP, needle	1	1	
4	13383-46160	•NEEDLE, jet	1	1	
5	13551-98500	•VALVE, throttle	1	1	CA:2.0
6	09491-36002	•JET, main	1	1	180
7	09494-00235	•NOZZLE, needle	1	1	
8	09492-30003	•JET, pilot	1	1	30
9	13370-96210	•VALVE ASSY, needle	1	1	
10	13392-01010	•GASKET, valve seat needle	1	1	
11	13252-02010	•FLOAT	1	1	
12	13691-98010	•GASKET, valve seat	1	1	
13	13254-01010	•PIN, float	1	1	
14	13269-01010	•SCREW, pilot air	1	1	
15	13267-93600	•SCREW, throttle stop	1	1	
16	13268-95110	•SPRING, stop screw	2	2	
17	13251-98011	•GASKET, float chamber	1	1	
18	13601-98010	•SCREW	4	4	
19	13571-96110	•LOCK WASHER	4	4	
20	13577-22600	•ADJUSTER, throttle cable	1	1	
21	13661-03010	•NUT, adjusting	1	1	
22	13413-98500	•LEVER, starter	1	1	
23	13564-98500	•LEVER, carburetor	1	1	
24	13266-99010	•GASKET, carburetor	1	1	
25	13581-01010	•SEAT, throttle valve spring	1	1	
26	13552-99010	•GUIDE, cable	1	1	from 13552-98500
27	13631-99002	KNOB, starter	1	1	to 13631-93500
28	09305-04003	BUSHING, starter guide	1	1	
29	09491-34001	JET, main	1	1	OPT,170
30	09491-38001	JET, main	1	1	OPT,190



FIG. 55

G - 9

FIG. 55 FUEL PUMP

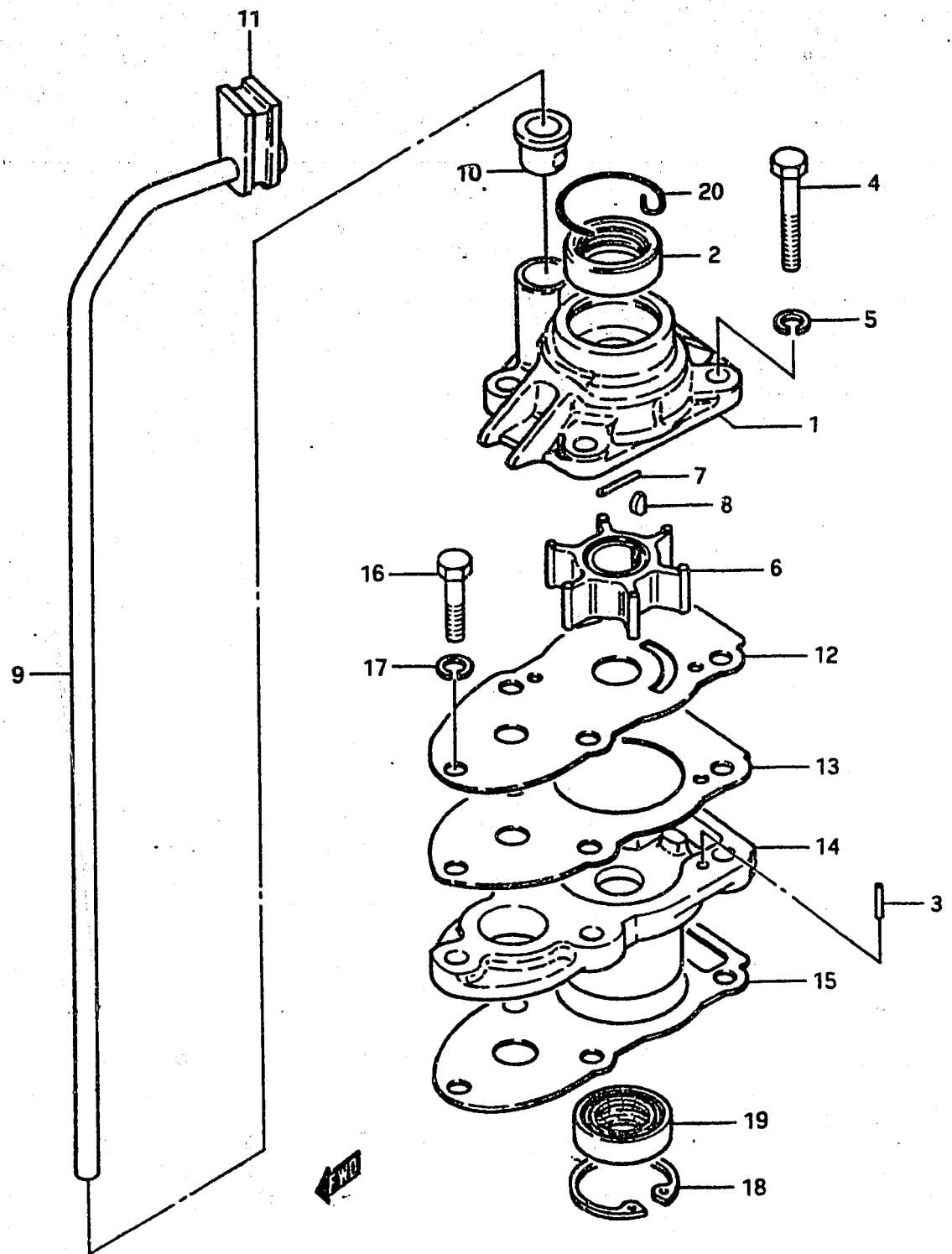


Ref. No.	Part No.	Description	Q'ty		Remarks
			D	F	
1	15100-98500	PUMP ASSY, fuel	1	1	
2-1	15180-98810	•VALVE SET	1	-	to 15180-98811
2-2	15180-98811	•VALVE SET	1	1	DT5D-10978~
3	15165-93010	•O RING, fuel pump	1	1	
4	15322-98500	INSULATOR, fuel pump	1	1	
5	15321-98500	GASKET, fuel pump	1	1	
6	09108-05006	STUD BOLT	2	2	
7	08321-21058	LOCK WASHER	2	2	
8	08310-11058	NUT	2	2	
9	09343-05137	HOSE, fuel (pump→carburetor)	1	1	L:500→165
10	09343-05137	HOSE, fuel (connector→filter)	1	1	L:500→90
11	09343-05137	HOSE, fuel (filter→pump)	1	1	L:500→180
12	15410-98500	FILTER, fuel	1	1	
13-1	65720-98500	PLUG, fuel connector	1	1	to 65720-98501
13-2	65720-98501	PLUG, fuel connector	-	1	to 65720-98502
13-3	65720-98502	PLUG, fuel connector	-	1	to 65720-98520
14	08310-22108	NUT	1	1	
15	08321-21108	LOCK WASHER	1	1	
16-1	09401-08403	CLIP, fuel hose	6	6	to 09401-09402
16-2	09401-09402	CLIP, fuel hose	-	6	

FIG. 56

G - 10

FIG. 56 WATER PUMP



Ref. No.	Part No.	Description	Q'ty		Remarks
			D	F	
1-1	17411-98500	CASE, water pump	1	-	to 17411-98501
1-2	17411-98501	CASE, water pump to (17411-98502)+(09289-10002)	1	-	DT5D-15499~
1-3	17411-98502	CASE, water pump	-	1	
2-1	09289-10003	OIL SEAL, pump case	1	-	to 17411-98503
2-2	09289-10002	OIL SEAL, pump case	-	1	
3	09202-04008	DOWEL PIN	2	2	
4	09100-06022	BOLT (6x35)	4	4	
5	09162-06001	LOCK WASHER	4	4	
6-1	17461-98400	IMPELLER, water pump	1	-	to 17461-98401
6-2	17461-98401	IMPELLER, water pump	1	1	DT5D-18161~ to 17461-98402
7	09202-02006	PIN, pump impeller	1	-	
8	09420-03002	KEY, pump impeller	1	1	
9-1	17561-98510	TUBE, water	1	1	S type
9-2	17561-98520	TUBE, water	1	1	L type
10	17415-98500	BUSHING, water pump	1	1	
11	17563-98500	GROMMET, water tube	1	1	
12	17471-98500	PLATE, pump case lower	1	1	to 17471-98501
13	17472-98500	GASKET, pump plate	1	1	to 17472-98501
14-1	56131-98500	HOUSING, driveshaft bearing	1	1	to 56131-98501
14-2	56131-98501	HOUSING, driveshaft bearing	-	1	
15	56132-98500	GASKET, bearing housing	1	1	
16	09100-06047	BOLT (6x45)	1	1	
17	09162-06001	LOCK WASHER	1	1	
18	08331-41309	CIRCLIP, bearing housing	1	1	
19	09289-10003	OIL SEAL, driveshaft lower	1	1	
20	09387-28002	CIRCLIP, pump case	1	-	~DT5D-15498

FIG.57

G - 11

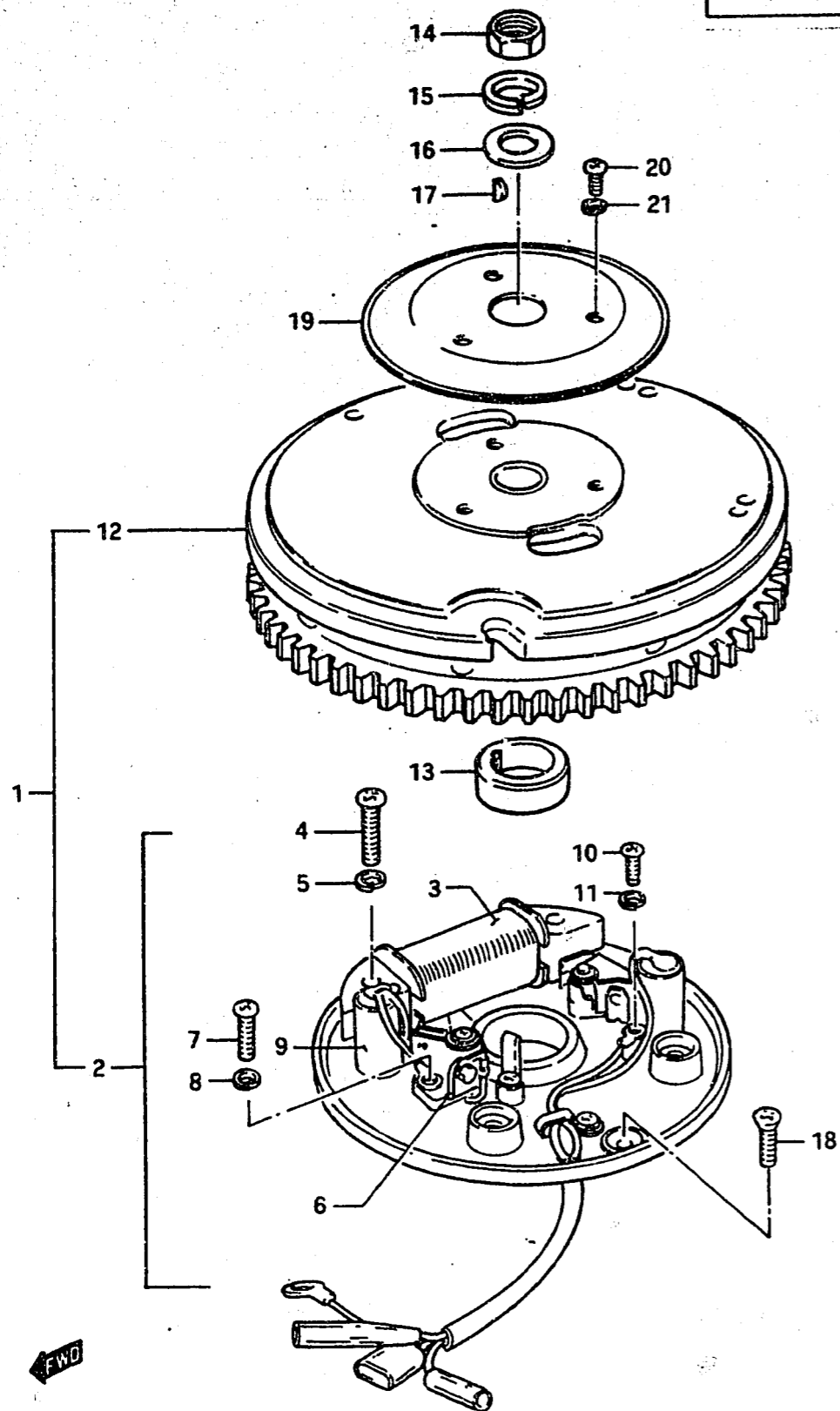


FIG.57 MAGNETO

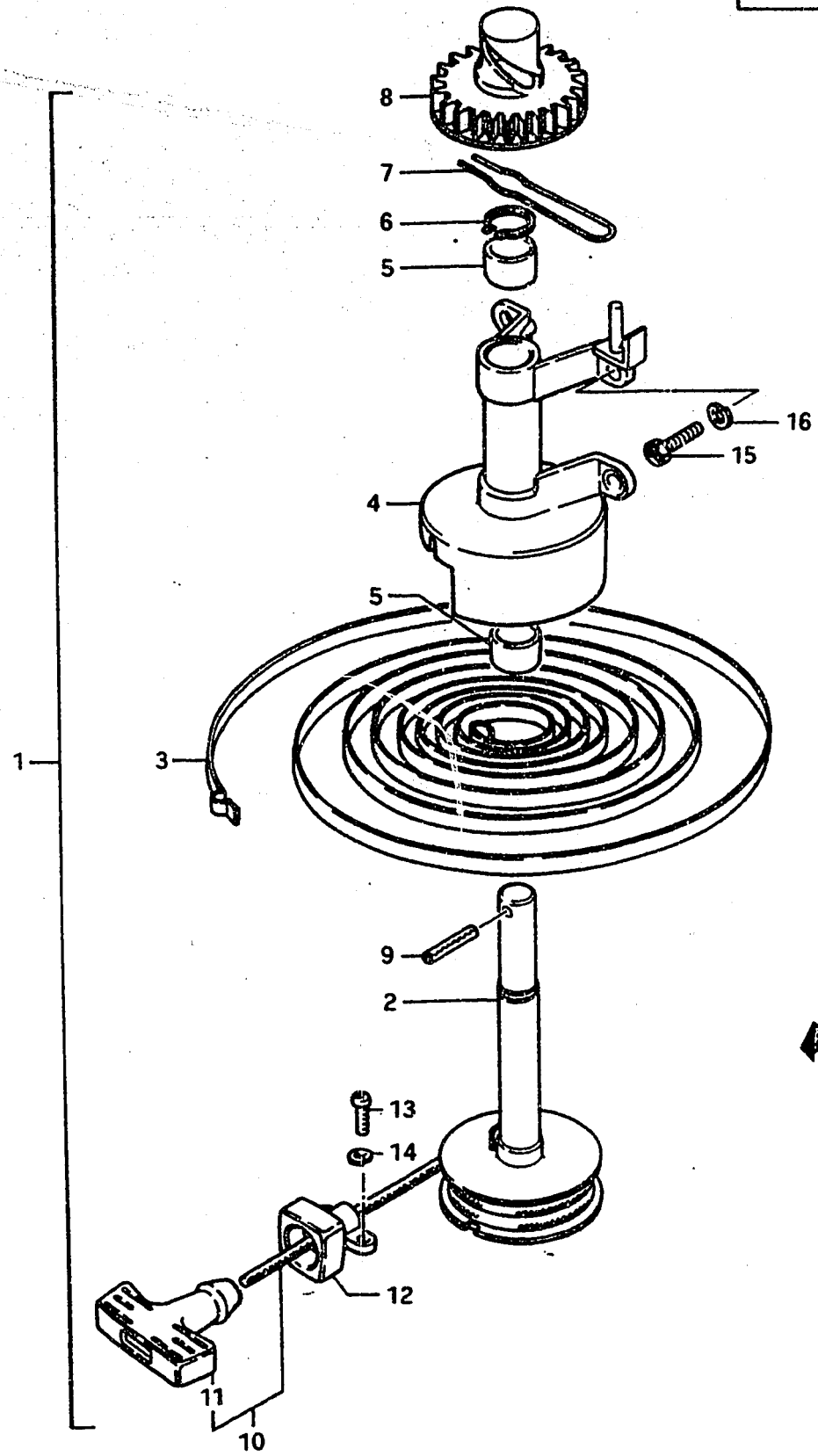
Ref. No.	Part No.	Description	Q'ty		Remarks
			D	F	
1	32100-98520	MAGNETO ASSY	1	1	
2	32101-98520	•STATOR ASSY	1	1	
3	32140-98520	••COIL ASSY, ignition	1	1	
4	02112-06258	••SCREW	2	2	
5	08321-21068	••LOCK WASHER	2	2	
6	32240-98520	••POINT ASSY, contact	2	2	
7	02112-05168	••SCREW	2	2	
8	08321-21058	••LOCK WASHER	2	2	
9	32341-98520	••CONDENSER	2	2	
10	02112-04108	••SCREW	2	2	
11	08321-21048	••LOCK WASHER	2	2	
12	32102-98520	•ROTOR	1	1	
13-1	32490-98520	•CAM, contact	1	1	
13-2	32490-98521	•CAM, contact	-	1	from 32490-98520
14	08310-22128	NUT	1	1	
15	08321-21128	LOCK WASHER	1	1	
16	08322-11128	WASHER	1	1	
17	08341-31039	KEY	1	1	
18	02122-05128	SCREW	2	2	
19	32725-98500	INSULATOR, magneto	1	1	
20	02112-06088	SCREW	3	3	
21	08321-21068	LOCK WASHER	3	3	

FIG. 58

G - 12

10

FIG. 58 STARTER

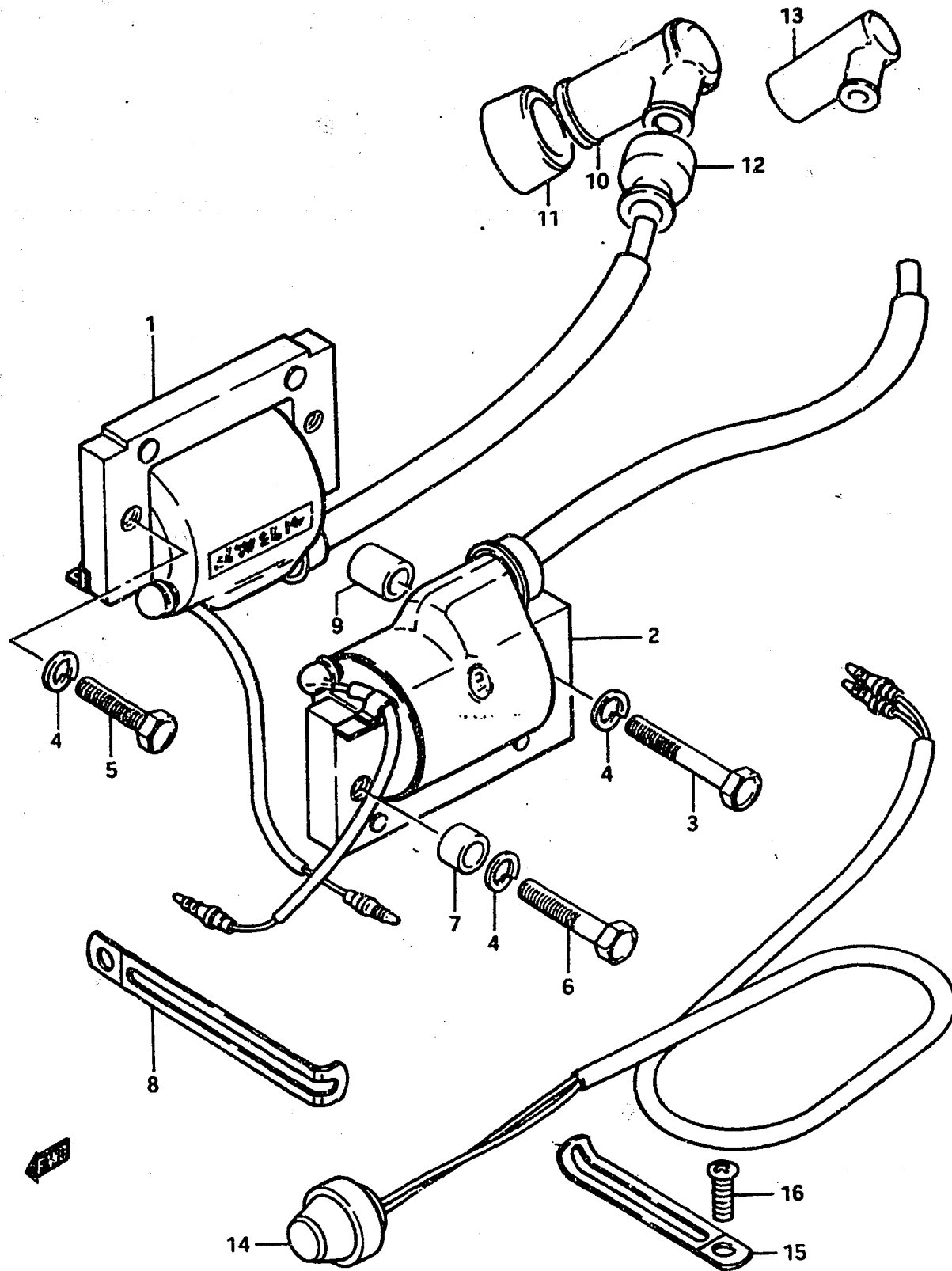


Ref. No.	Part No.	Description	Q'ty		Remarks
			D	F	
1-1	18100-98500-01J	STARTER ASSY, recoil	1	1	to 18100-98501-01J
1-2	18100-98501-01J	STARTER ASSY, recoil	-	1	
2	18121-98500	•REEL, starter	1	1	DT5D-18161~
3	18142-98500	•SPRING, recoil	1	1	
4	18111-98500-01J	•HOUSING, starter	1	1	
5	18522-98500	•BUSHING, starter	2	2	
6	18524-98500	•CIRCLIP, starter	2	2	
7-1	18541-98500	•SPRING, friction to (18541-98501)+(18531-98501)	1	-	
7-2	18541-98501	•SPRING, friction	1	1	DT5D-18161~
8-1	18531-98500	•PINION, starter to (18531-98501)+(18541-98501)	1	-	
8-2	18531-98501	•PINION, starter	1	1	
9	18525-98500	•PIN, starter	1	1	
10	18170-98500	•GRIP ASSY, starter	1	1	
11	18210-98500	•GRIP	1	1	
12-1	18181-98500-01J	GUIDE, rope	1	1	
12-2	18181-98501-01J	GUIDE, rope	-	1	from 18181-98500-01J
13	02112-04168	SCREW	2	2	
14	08321-21048	LOCK WASHER	2	2	
15	01107-06208	BOLT	4	4	
16	08321-21068	LOCK WASHER	4	4	

FIG. 59

G - 13 <sup>11</sup>

FIG. 59 ELECTRICAL



Ref. No.	Part No.	Description	Q'ty		Remarks
			D	F	
1-1	33411-98520	COIL ASSY, ignition upper	1	-	
1-2	33410-98520	COIL ASSY, ignition upper	-	1	
1-3	33410-98521	COIL ASSY, ignition upper	-	1	from 33410-98520
2-1	33412-98520	COIL ASSY, ignition lower	1	-	
2-2	33420-98520	COIL ASSY, ignition lower	-	1	
2-3	33420-98521	COIL ASSY, ignition lower	-	1	from 33420-98520
3-1	01107-06358	BOLT	2	-	
3-2	01107-06458	BOLT, ignition coil RH	-	2	
4	08321-21068	LOCK WASHER	4	4	
5	01107-06208	BOLT	1	-	
6	01107-06308	BOLT	1	2	
7	09180-06030	SPACER (6.8x10x10)	1	-	
8	09404-06415	CLAMP	1	1	
9	09180-06061	SPACER	2	2	
10	33510-22010	CAP, spark plug	2	2	
11	33541-98002	SEAL, spark plug	2	2	
12	33542-98000	SEAL, high tension cord	2	2	
13	33510-95510	CAP, spark plug	1	1	E13
14-1	37870-93113	SWITCH ASSY, engine stop	1	1	
14-2	37800-93150	SWITCH ASSY, engine stop	-	1	from 37870-93113
15	09404-06401	CLAMP	1	1	
16	02112-06108	SCREW	1	1	

FIG.60

G - 14

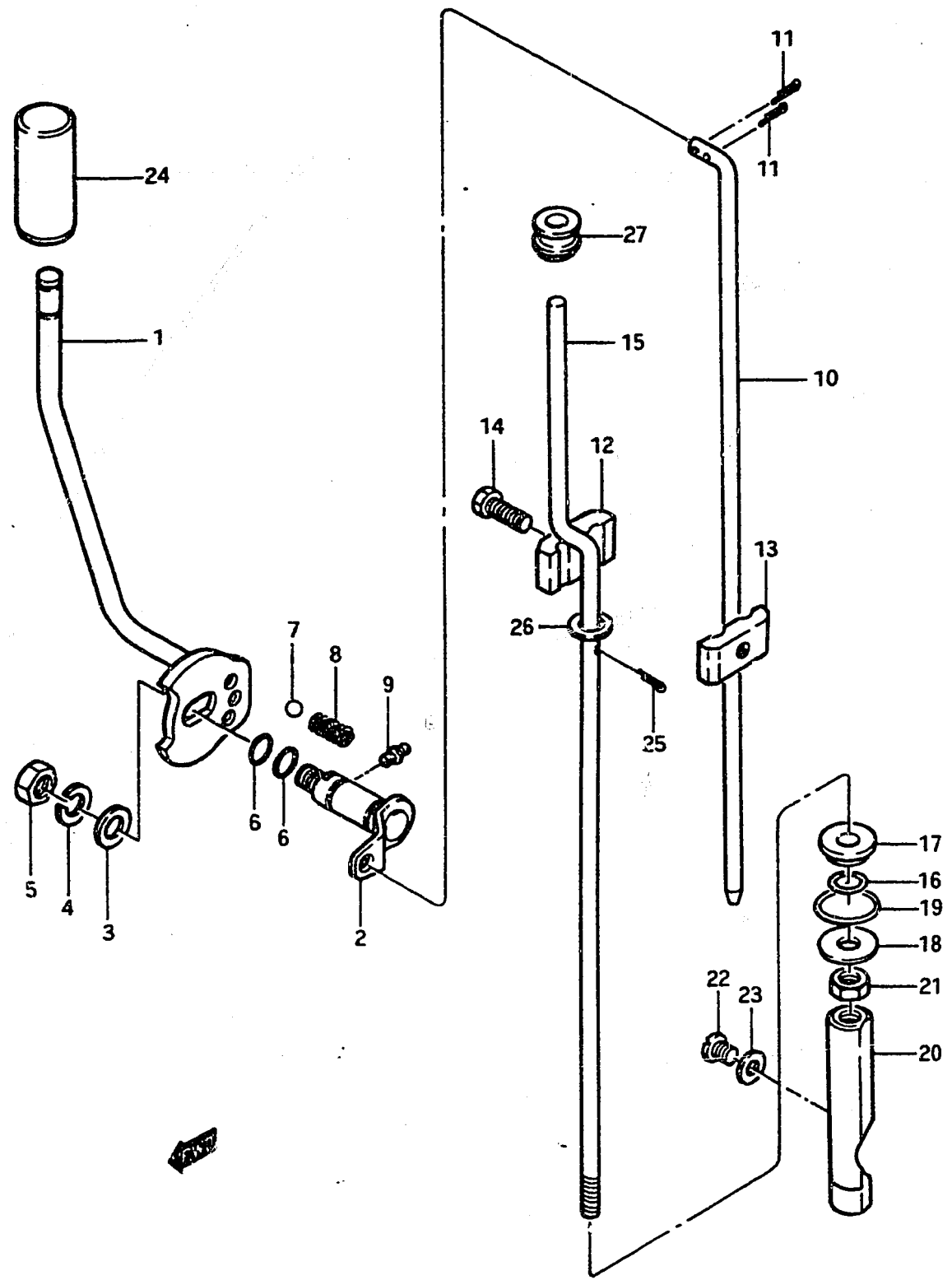


FIG.60 CLUTCH LEVER

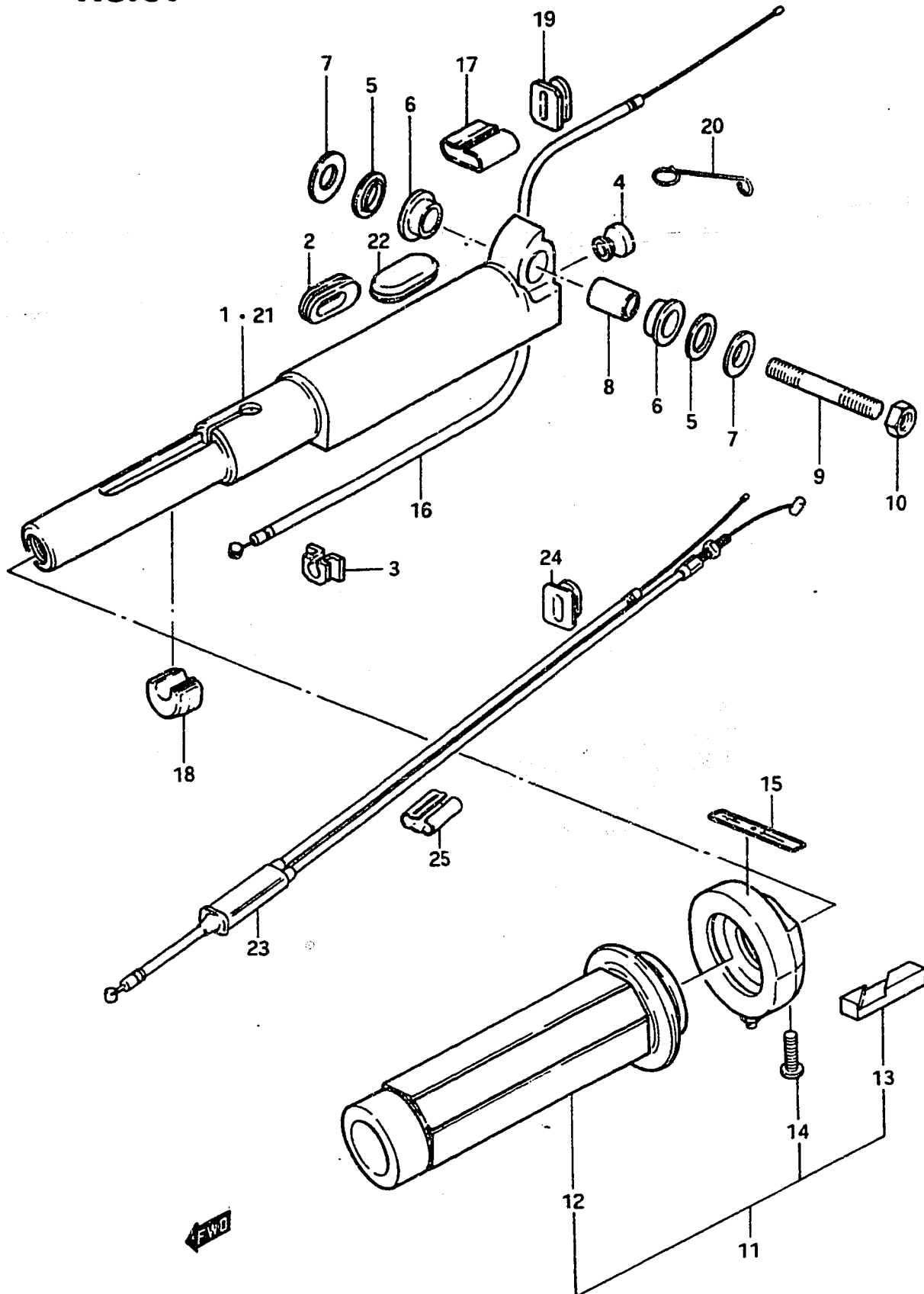
Ref. No.	Part No.	Description	Q'ty		Remarks
			D	F	
1-1	21110-98500	LEVER, clutch	1	1	to 21110-98502
1-2	21110-98502	LEVER, clutch	-	1	
2-1	21210-98500	SHAFT, clutch lever	1	1	to 21210-98501
2-2	21210-98501	SHAFT, clutch lever	-	1	to 21210-98502
3	09160-08015	WASHER (8.5x16x1.6)	1	1	
4	09162-08003	LOCK WASHER	1	1	
5	09140-08003	NUT	1	1	
6	09280-09003	O RING, clutch lever shaft	2	2	
7	09260-10003	BALL, clutch notch	1	1	
8	09440-07021	SPRING, clutch notch	1	1	
9	22511-99000	GREASE NIPPLE	1	1	
10-1	23111-98510	ROD, clutch	1	1	S type
10-2	23111-98520	ROD, clutch	1	1	L type
11	09204-01001	COTTER PIN	2	2	
12	23311-99001	CONNECTOR (1)	1	1	
13	23321-99001	CONNECTOR (2)	1	1	
14-1	09100-06020	BOLT	1	-	
14-2	09128-06014	BOLT	-	1	
15-1	25111-98510	ROD, shifting	1	1	S type
15-2	25111-98520	ROD, shifting	1	1	L type
16	09280-06004	O RING, shifting rod	1	1	
17	25211-98500	GUIDE, shifting rod	1	1	
18	08212-06201	WASHER, shifting rod guide	1	1	
19-1	09280-16004	O RING, shifting rod guide	1	1	to 09280-16005
19-2	09280-16005	O RING, shifting rod guide	-	1	
20	25311-93100	CAM, shifting	1	1	
21	08310-11068	NUT	1	1	
22	09139-06003	SCREW, shifting cam stop	1	1	
23	09168-06002	GASKET	1	1	
24	21141-98500	KNOB, clutch lever	1	1	
25	09204-01001	COTTER PIN	1	1	
26	09160-06015	WASHER (6.5x13x1)	1	1	
27-1	09305-06006	BUSHING, shifting rod	1	1	to 09305-06008
27-2	09305-06008	BUSHING, shifting rod	-	1	

FIG.61

G - 15

13

FIG.61 HANDLE - GRIP

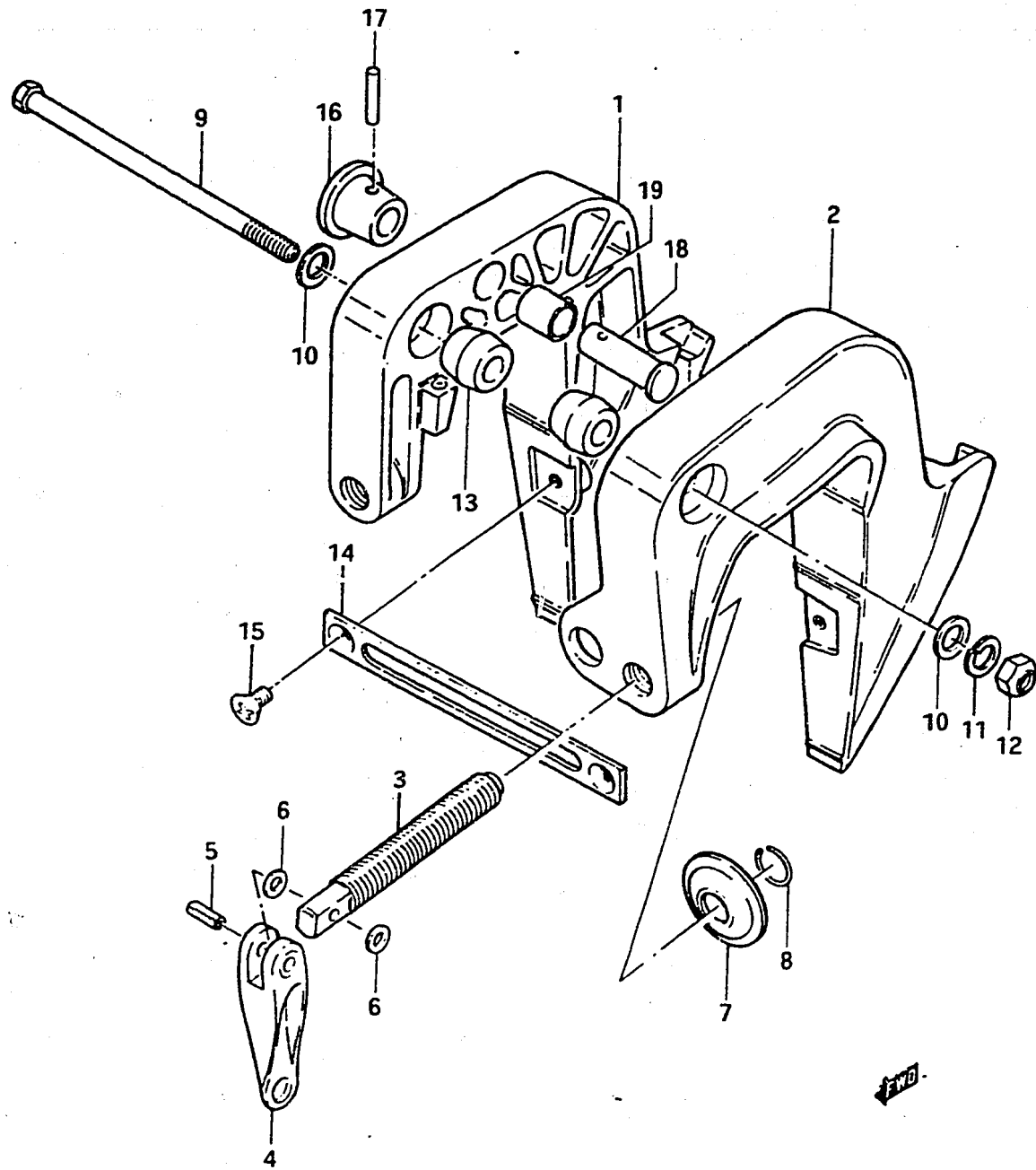


Ref. No.	Part No.	Description	Q'ty		Remarks
			D	F	
1	63111-98500-01J	HANDLE, tiller	1	1	
2	63113-96000	GROMMET, cable support	1	1	
3	63112-93103	GROMMET, stop switch cord	1	1	
4	09321-07001	CUSHION, handle	1	1	
5	63321-99000	SEAT, handle rubber	2	2	
6	09305-12007	BUSHING, handle cushion	2	2	
7	09160-10041	WASHER, handle pivot	2	2	
8	09303-10001	SPACER, handle pivot	1	1	
9	09108-10026	STUD BOLT, handle pivot	1	1	
10	09140-10017	NUT, handle	1	1	
11-1	63200-93101	GRIP ASSY, throttle	1	1	to 63200-93102
11-2	63200-93102	GRIP ASSY, throttle	-	1	to 63200-93103
11-3	63200-93103	GRIP ASSY, throttle	-	1	
12-1	63210-93101	·GRIP, throttle	1	1	to 63210-93102
12-2	63210-93102	·GRIP, throttle	-	1	
13	63214-93100	·PIECE, sliding	1	1	
14	63218-93100	·SCREW, cover	2	2	
15	63215-93101	MARK, handle grip	1	1	
16	63610-96200	CABLE ASSY, throttle	1	1	
17	09408-00001	CLIP, cable & switch cord	1	1	
18-1	63331-93100	FRICITION, handle	1	1	to 63331-93101
18-2	63331-93101	FRICITION, handle	-	1	
19	09309-06004	GROMMET, cable (2)	1	1	
20-1	63632-98510	HOLDER, throttle cable	1	1	to 63632-98511
20-2	63632-98511	HOLDER, throttle cable	-	1	
21	63111-96100-01J	HANDLE, tiller	1	1	E13
22	09250-08006	CAP, tiller handle	1	1	
23	63610-98500	CABLE ASSY, throttle	1	1	
24	61185-98501	GROMMET, cable	1	1	E3
25	63631-98500	CLIP, cable/switch cord	1	1	

FIG.62

**H - 2**

FIG.62 CLAMP BRACKET



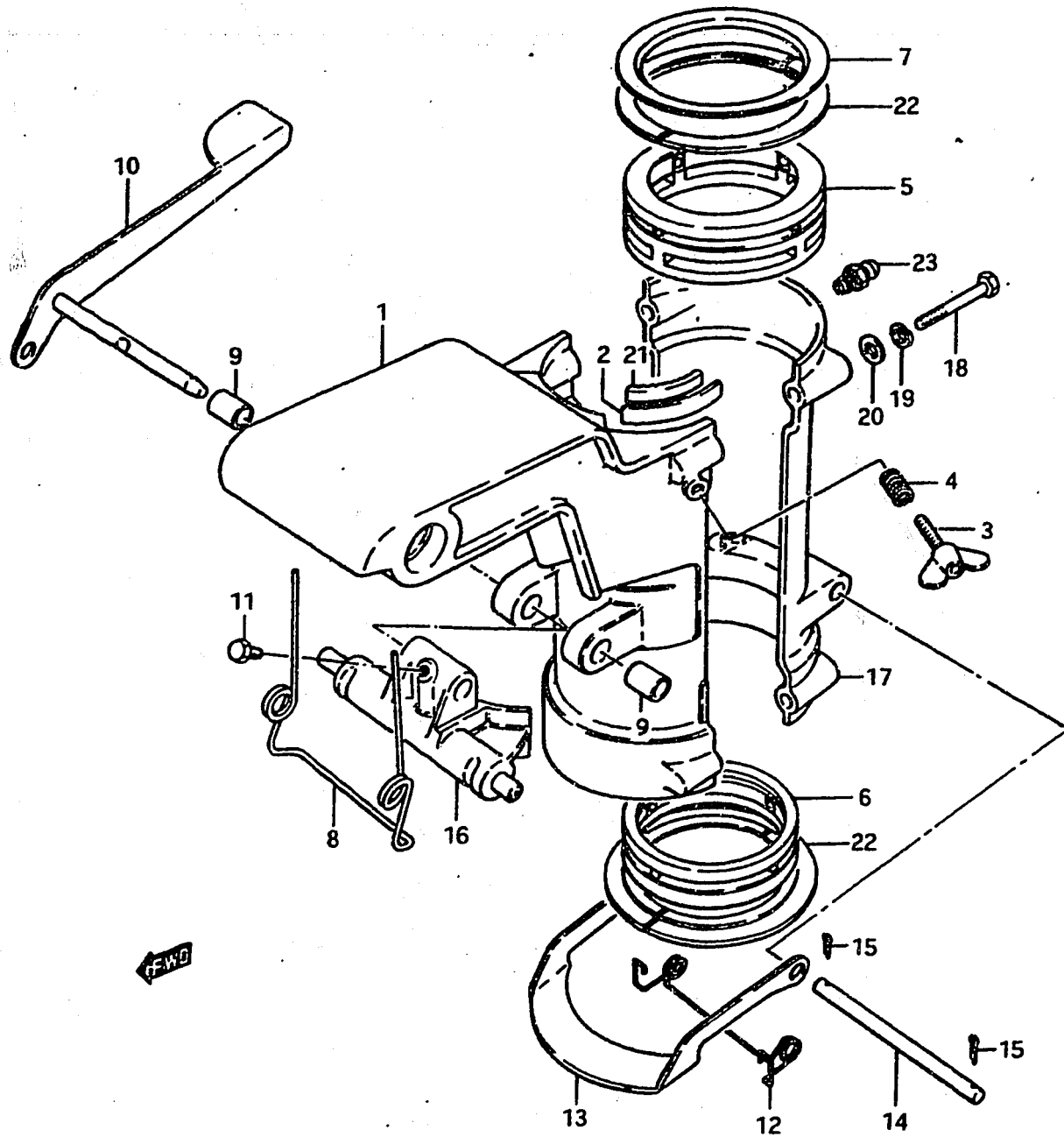
Ref. No.	Part No.	Description	Q'ty		Remarks
			D	F	
1-1	41111-98500-01J	BRACKET, clamp RH	1	-	to 41111-98501-01J
1-2	41111-98501-01J	BRACKET, clamp RH	1	1	to 41111-98502-01J DT5D-15115~
1-3	41111-98502-01J	BRACKET, clamp RH	-	1	to 41111-98503-01J
2-1	41121-98500-01J	BRACKET, clamp RH	1	1	to 41121-98501-01J
2-2	41121-98501-01J	BRACKET, clamp LH	-	1	to 41121-98502-01J
3	41211-99001	SCREW, clamp	2	2	
4	41212-99000-01J	HANDLE, clamp	2	2	
5	09205-05001	PIN, clamp handle	2	2	
6	09181-05001	SHIM (5.2x13x0.1)	AR(0~4)		
7	41213-99001	PLATE, clamp	2	2	
8	09380-07001	RING, clamp plate	2	2	
9	09100-08144	BOLT, swivel shaft (8x145)	1	1	
10	09160-08015	WASHER (8.5x16x1.6)	2	2	
11	09162-08003	LOCK WASHER	-	1	
12	09159-08026	NUT	1	1	
13	43321-96000	BUSHING, tilt friction	2	2	
14	41311-98500	PLATE, clamp bracket	1	1	
15	09125-06020	SCREW, clamp bracket	2	2	
16	41221-93001	KNOB, tilt stopper	-	1	} DT5D-15115~
17	09205-03015	PIN, tilt stopper knob	-	1	
18	09200-12001	PIN, tilt stopper	-	1	
19	09300-12009	BUSHING, tilt stopper pin	-	1	



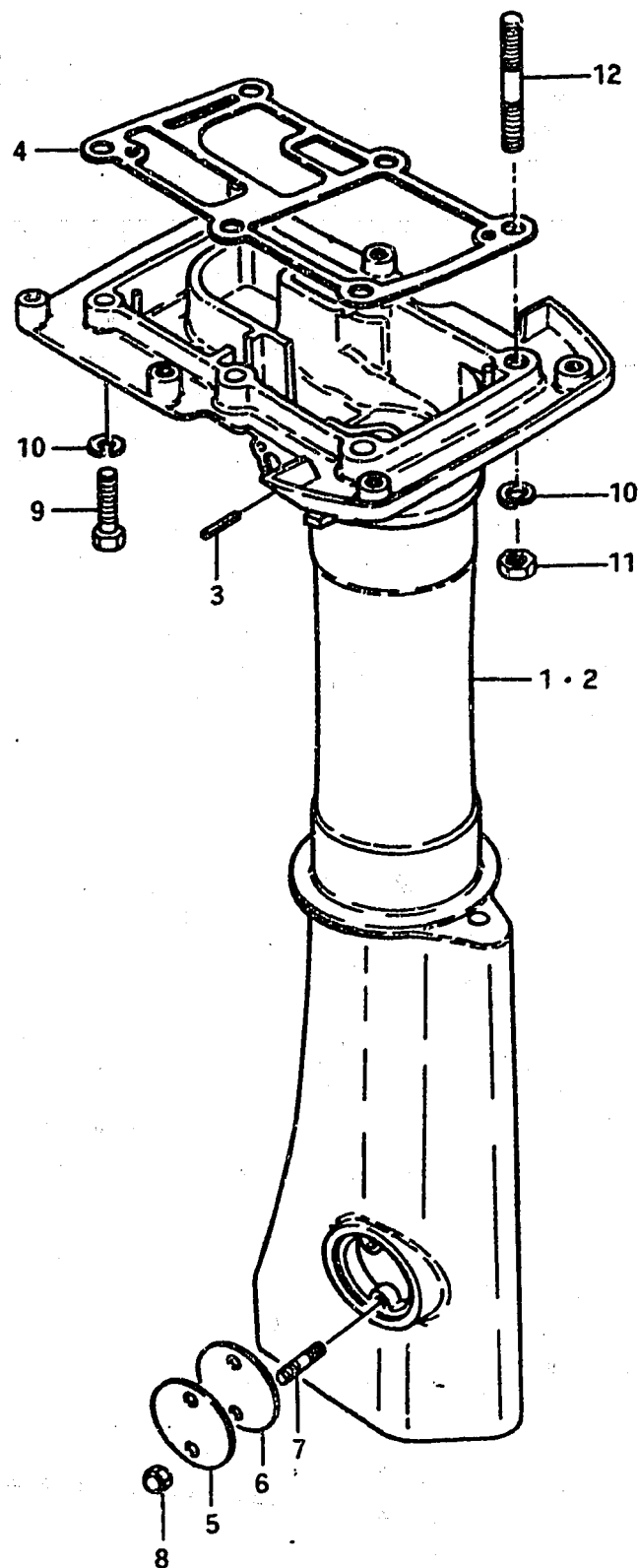
FIG.63

H - 3

FIG.63 SWIVEL BRACKET



Ref. No.	Part No.	Description	Q'ty		Remarks
			D	F	
1-1	43111-98500-01J	BRACKET, swivel	1	-	to 43111-98501-01J
1-2	43111-98501-01J	BRACKET, swivel	1	1	to 43111-98502-01J DT5D-15115~
1-3	43111-98502-01J	BRACKET, swivel	-	1	to (43111-98101-01J)+(43121-98100-01J)+(43410-98101)+(43711-98100)
2	43411-98500	ADJUSTER, steering	1	1	
3	09119-06040	BOLT, steering adjuster	1	1	
4-1	09440-09009	SPRING, steering adjuster	1	1	L:13
4-2	09440-09012	SPRING, steering adjuster	-	1	L:15
5-1	43711-98502	BUSHING, steering upper to (43711-98503)+(43713-98500)	1	-	
5-2	43711-98503	BUSHING, steering upper	-	1	
6-1	43721-98501	BUSHING, steering lower to (43721-98502)+(43713-98500)	1	-	
6-2	43721-98502	BUSHING, steering lower	-	1	to 43721-98503
6-3	43721-98503	BUSHING, steering lower	-	1	
7	43712-98500	PLATE, steering upper	1	1	
8-1	45211-98500	SPRING, rack lever	1	1	to 45211-98502
8-2	45211-98502	SPRING, rack lever	-	1	
9	09300-08005	BUSHING, rack lever	2	2	
10-1	45110-98500	LEVER, rack	1	1	to 45110-98501
10-2	45110-98501	LEVER, rack	-	1	
11	09139-05003	SCREW, rack lever	1	1	
12	45212-98500	SPRING, reverse lock arm	1	1	
13-1	45231-98500	ARM, reverse lock	1	1	
13-2	45231-98501	ARM, reverse lock	-	1	from 45231-98500
14	09200-08026	PIN, reverse lock arm	1	1	
15	09204-01001	COTTER PIN	2	2	
16-1	45411-98500-01J	BLOCK, thrust	1	1	to 45411-98501-01J
16-2	45411-98501-01J	BLOCK, thrust	-	1	
17-1	43121-98500-01J	COVER, swivel bracket	1	-	to 43121-98501-01J
17-2	43121-98501-01J	COVER, swivel bracket to (43121-98100-01J)+(43111-98101-01J)+(43410-98101)+(43711-98100)	1	1	DT5D-13039~
18	09100-06035	BOLT, swivel bracket (6x40)	4	4	
19	09162-06001	LOCK WASHER	4	4	
20	09160-06015	WASHER (6.5x13x1)	4	4	
21	43416-98500	BLOCK, steering adjuster	1	1	
22	43713-98500	PIECE, steering bushing	-	4	
23	22511-99000	GREASE NIPPLE	-	2	



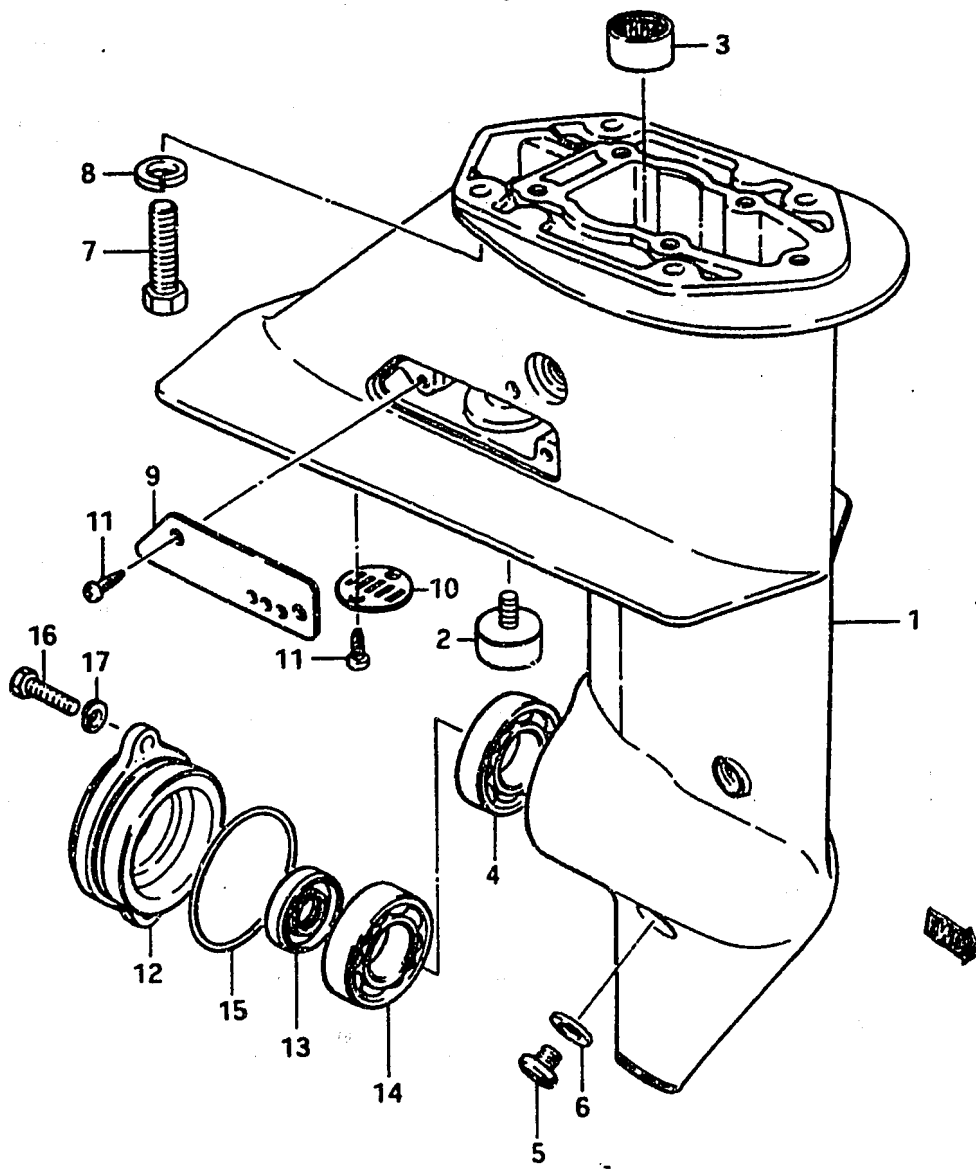
Ref. No.	Part No.	Description	Q'ty		Remarks
			D	F	
1-1	52110-98510-01J	HOUSING, drive shaft	1	1	S type to 52110-98511-01J
1-2	52110-98511-01J	HOUSING, drive shaft	-	1	
2-1	52110-98520-01J	HOUSING, drive shaft	1	1	L type to 52110-98521-01J to 52110-98522-01J
2-2	52110-98521-01J	HOUSING, drive shaft	-	1	
2-3	52110-98522-01J	HOUSING, drive shaft	-	1	
3	09205-05001	DOWEL PIN, clutch lever	1	1	
4	52113-98500	GASKET, drive shaft housing	1	1	
5	52115-98500-01J	COVER, clutch adjusting hole	1	1	
6	52116-98500	GASKET, adjusting hole	1	1	
7	09108-05002	STUD BOLT	2	2	
8	09145-05001	NUT	2	2	
9	09100-08112	BOLT (8x30)	6	4	
10	09162-08003	LOCK WASHER	6	6	
11	09140-08003	NUT	-	2	
12	09108-08036	STUD BOLT	-	2	

FIG.65

H - 5

17

FIG.65 GEAR CASE



Ref. No.	Part No.	Description	Q'ty		Remarks
			D	F	
1-1	55100-98820-01J	CASE ASSY, gear	1	1	to 55100-98821-01J
1-2	55100-98821-01J	CASE ASSY, gear	-	1	to 55100-98822-01J
1-3	55100-98822-01J	CASE ASSY, gear to (55110-98502-01J)+(55321-93141)	-	1	
2-1	55321-93140	·ZINC, protection	1	1	
2-2	55321-93141	·ZINC, protection	-	1	from 55321-93140
3	09263-14010	·BEARING, pinion shaft	1	1	
4	08113-60040	·BEARING, gear	1	1	
5	09248-10003	PLUG, drain	3	3	
6	09168-10004	GASKET, drain plug	3	3	to 09168-10022
7	09100-08112	BOLT, gear case (8x30)	4	4	
8	09162-08003	LOCK WASHER, gear case	4	4	
9	55112-98500-01J	COVER, gear case side	1	1	
10	55114-98500	COVER, gear case lower	1	1	
11	03112-04109	SCREW	4	4	
12	56111-98500-01J	HOUSING, bearing	1	1	
13	09289-12002	OIL SEAL, bearing housing	1	1	
14	08113-60040	BEARING, gear	1	1	
15	09280-48003	O RING, bearing housing	1	1	
16	09100-06020	BOLT (6x20)	2	2	
17	09162-06001	LOCK WASHER	2	2	

FIG.66

H - 6

FIG.66 PROPELLER

Ref. No.	Part No.	Description	Qty		Remarks
			D	F	
1	58111-98721-01T	PROPELLER (F500)	1	1	3x200x130
2	58111-99721-01T	PROPELLER (F600)	1	1	3x200x150
3-1	58111-98500-01T	PROPELLER (F610) STD	1	1	3x200x170 from 58111-98500-01T
3-2	58111-98501-01T	PROPELLER (F610) STD	-	1	
4-1	58120-98500	BUSHING, propeller	1	1	to 58120-98510
4-2	58120-98510	BUSHING, propeller	-	1	DT5F-11580
5	09202-04009	SHEAR PIN	1	1	
6	09161-12003	WASHER, shear pin	1	1	
7-1	58131-98500	NUT, propeller	1	1	
7-2	58130-98100	NUT, propeller	-	1	from 58131-98500
8	09204-03001	COTTER PIN	1	1	

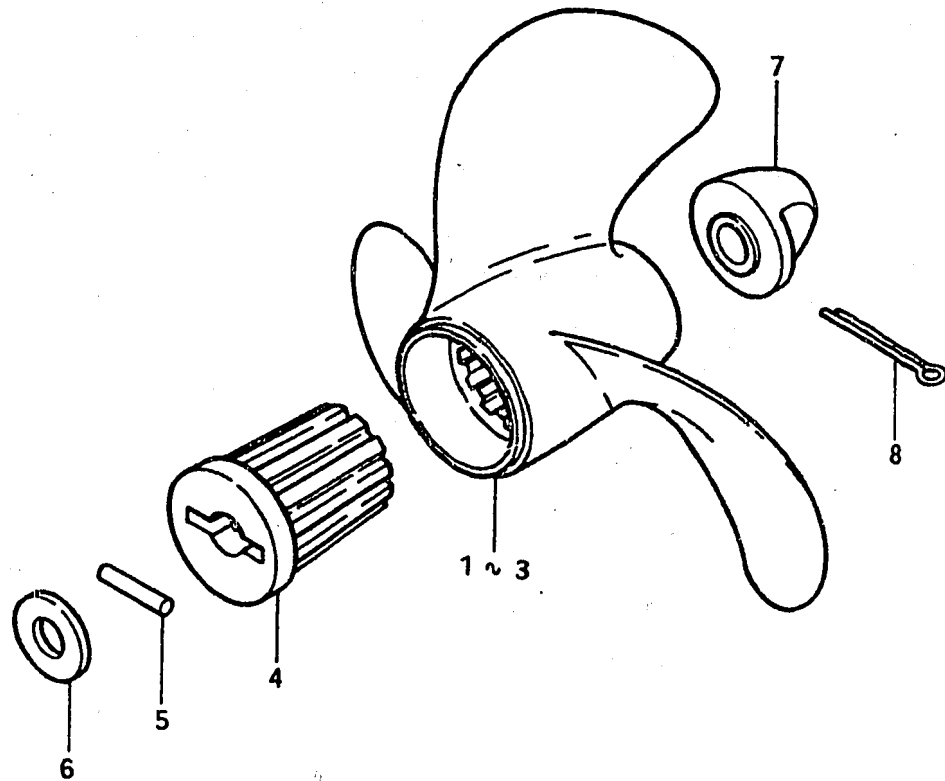


FIG. 67

H - 7

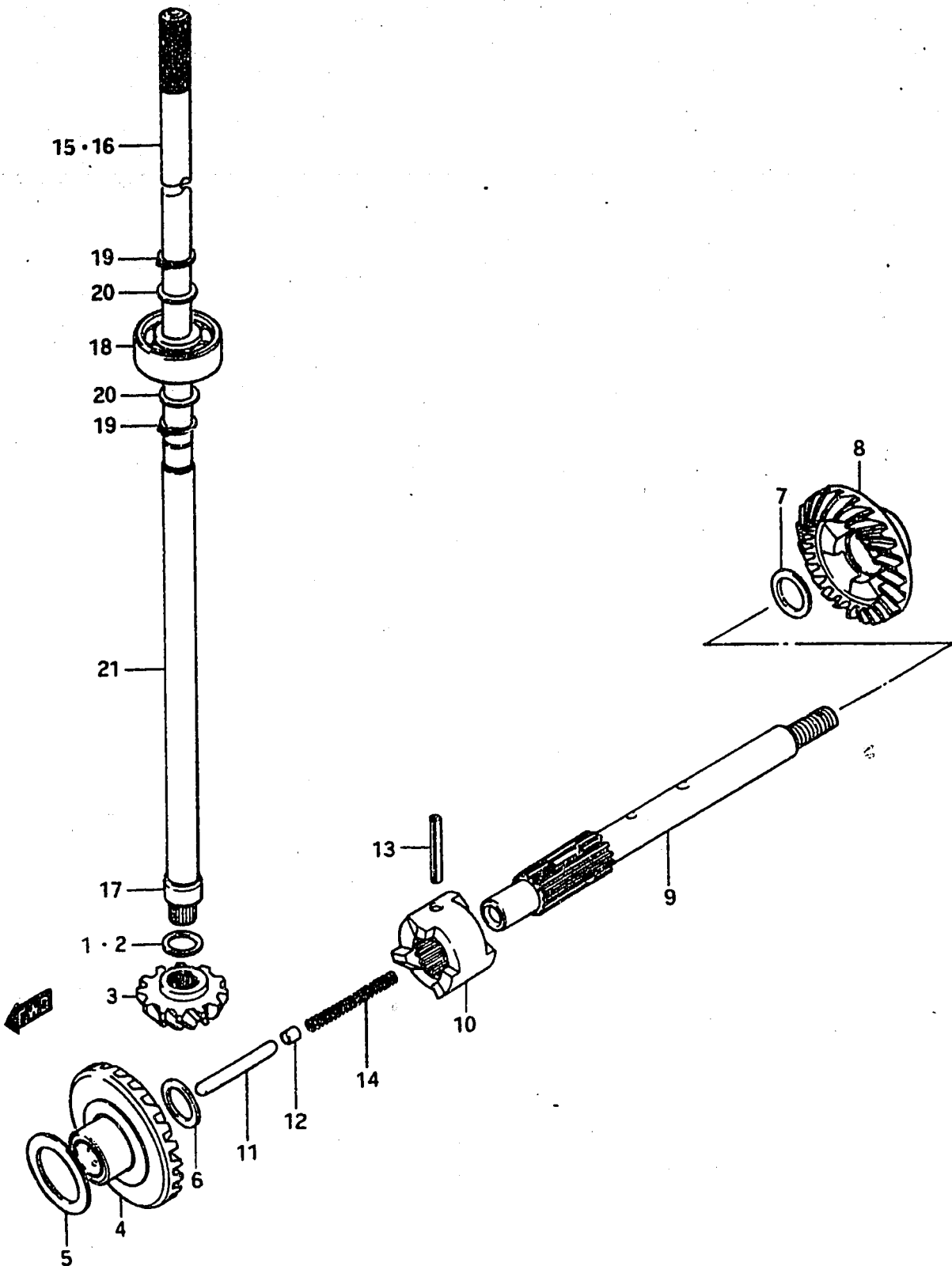


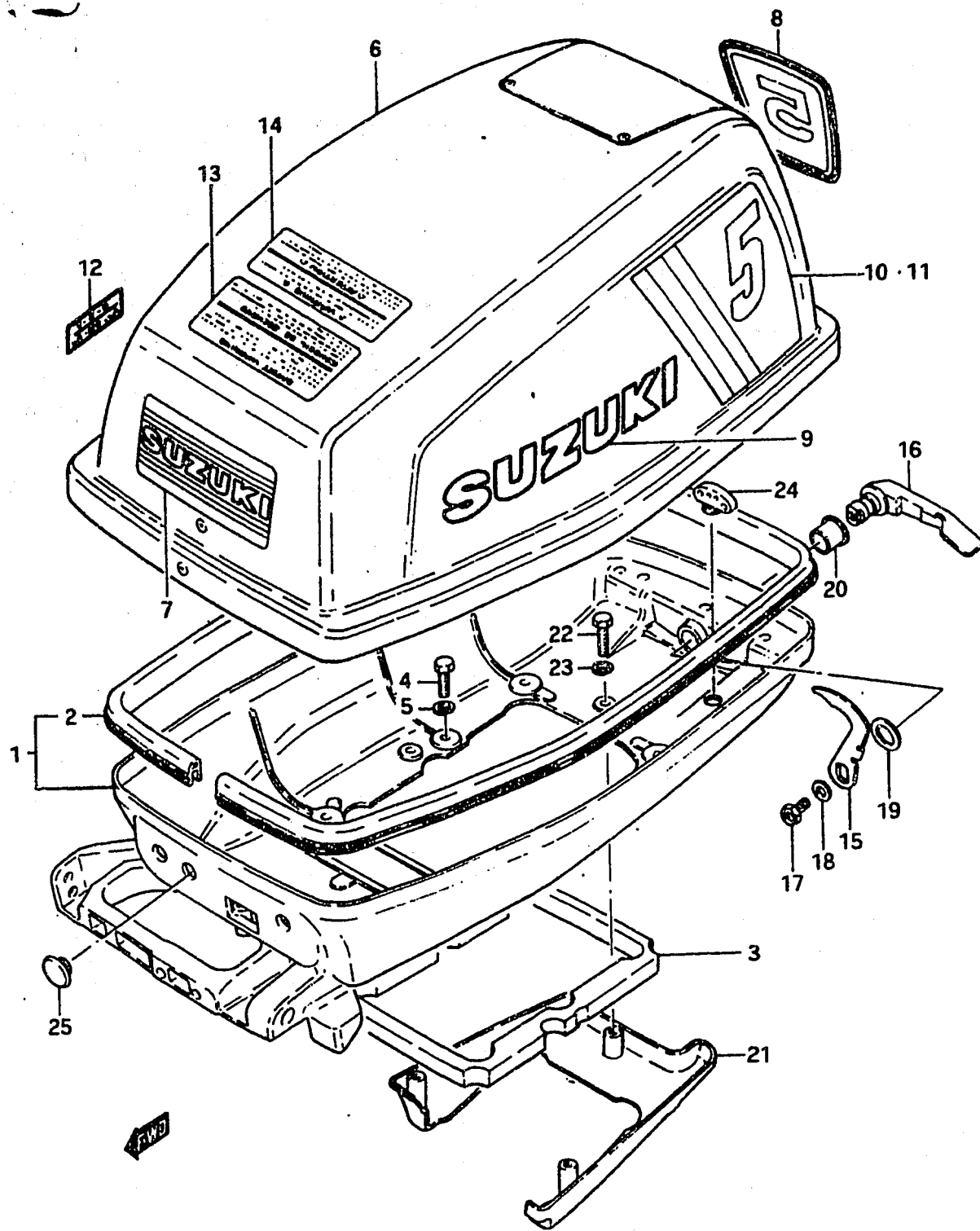
FIG. 67 TRANSMISSION

Ref. No.	Part No.	Description	Q'ty		Remarks
			D	F	
1	08211-10151	THRUST WASHER	AR(0~1)	T:1.0	
2-1	08221-10143	SHIM, pinion adjusting	AR(0~1)	T:0.1	
2-2	08221-10144	SHIM, pinion adjusting	AR(0~2)	T:0.2	
2-3	08221-10145	SHIM, pinion adjusting	AR(0~1)	T:0.5	
3	57311-98500	PINION	1	1	
4	57510-98500	GEAR, forward	1	1	
5	08211-12171	THRUST WASHER, gear	AR(0~2)	T:1.0	
6	08221-12175	SHIM, gear	AR(0~2)	T:0.5	
7-1	08221-20303	SHIM, gear back	AR(0~2)	T:0.1	
7-2	08221-20304	SHIM, gear back	AR(0~4)	T:0.2	
7-3	08221-20305	SHIM, gear back	AR(0~2)	T:0.5	
8	57520-98500	GEAR, reverse	1	1	
9	57611-98500	SHAFT, propeller	1	1	
10	57621-98500	SHIFTER, clutch dog	1	1	
11	57631-98500	ROD, push	1	1	
12	57632-98500	PIN, push	1	1	
13	09209-04017	PIN, clutch dog shifter	1	1	
14	09440-05019	SPRING, return	1	1	
15-1	57110-98511 to (57110-98512)+(09420-03002)+(17461-98401)	SHAFT, drive	1	-	S type
15-2	57110-98512	SHAFT, drive	1	1	to 57110-98513 DT5D-18161~
15-3	57110-98513	SHAFT, drive	-	1	
16-1	57110-98521 to (57110-98522)+(09420-03002)+(17461-98401)	SHAFT, drive	1	-	L type
16-2	57110-98522	SHAFT, drive	1	1	to 57110-98523 DT5D-18161~
16-3	57110-98523	SHAFT, drive	-	1	
17	57117-98501	·INNER RACE, pinion bearing	1	1	
18	08113-62000	·BEARING, driveshaft	1	1	
19	08331-31109	·CIRCLIP	2	2	
20	08211-10161	·THRUST WASHER	2	2	
21	57116-98500	·SPACER, drive shaft	1	1	

FIG.68

H - 8

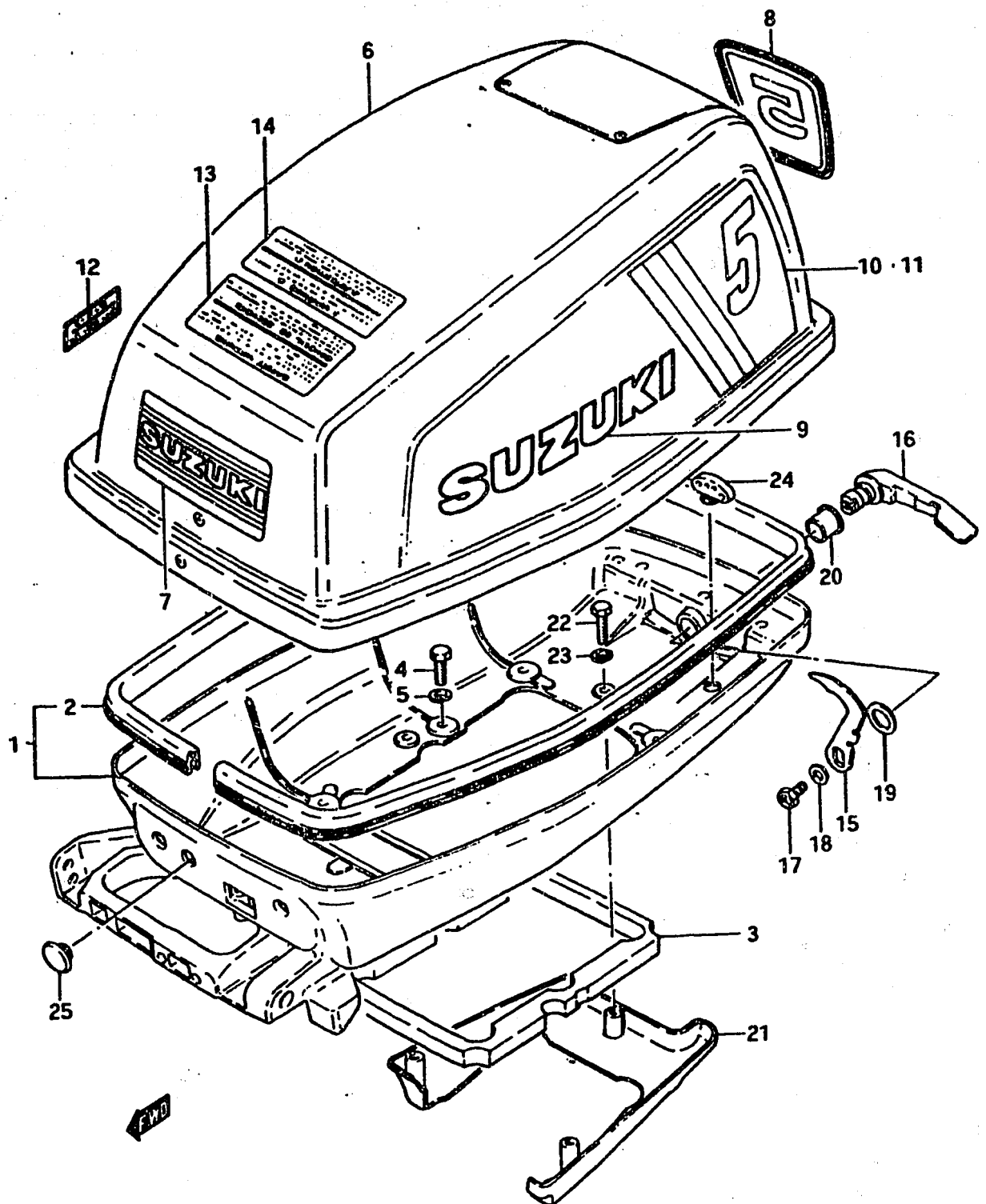
FIG.68 ENGINE COVER



Ref. No.	Part No.	Description	Q'ty		Remarks
			D	F	
1	61110-96005-01J	COVER, engine lower	1	1	
2-1	61112-96003	•RUBBER, engine lower	1	1	
2-2	61112-96004	•RUBBER, engine lower	-	1	from 61112-96003
3	61113-98500	SEAL, engine lower	1	1	
4	09100-06020	BOLT (6x20)	6	6	
5	09162-06001	LOCK WASHER	6	6	
6-1	61400-98830-01T	COVER SET, engine	1	1	to 61400-98831-01T
6-2	61400-98831-01T	COVER SET, engine	-	1	
6-3	61400-98832-01T	COVER SET, engine	-	1	from 61400-98831-01T
7-1	61422-98500	•EMBLEM, front	1	1	
7-2	61422-98501	•EMBLEM, front	-	1	
8-1	61435-98500	•EMBLEM, rear	1	1	
8-2	61435-98501	•EMBLEM, rear	-	1	
9-1	61441-98500	•EMBLEM, cover side	2	2	
9-2	61441-98410	•EMBLEM, cover side	-	2	from 61441-98401
10-1	61443-98500	•DICURL, cover side RH	1	1	
10-2	61443-98501	•DICURL, cover side RH	-	1	
11-1	61453-98500	•DICURL, cover side LH	1	1	
11-2	61453-98501	•DICURL, cover side LH	-	1	
12-1	21131-96001	•MARK, clutch shifting	1	1	to 21131-96002
12-2	21131-98500	•MARK, clutch shifting	-	1	
13-1	61458-95201	MARK, safety warning	1	1	
13-2	61458-98500	MARK, safety warning	-	1	
14-1	61457-93001	MARK, warning	1	1	
14-2	61457-98500	MARK, warning	-	1	
15	61631-96001	HOOK, lower cover	1	1	
16	61633-96002-01J	LEVER, hook	1	1	
17	01107-06108	BOLT	1	1	
18	08322-21068	WASHER	1	1	
19	09164-13001	WASHER, wave	1	1	
20	09306-13002	BUSHING, hook lever	1	1	

FIG. 68

H - 9



21

FIG. 68 ENGINE COVER

Ref. No.	Part No.	Description	Q'ty		Remarks
			D	F	
21	61131-98500-01J	COVER, engine cover lower	1	1	
22-1	09100-06020	BOLT (6x20)	3	-	
22-2	03112-06209	SCREW	-	3	
23	09162-06001	LOCK WASHER	3	-	
24-1	61521-96000	HOLDER, shear pin	1	1	D:11φ
24-2	61521-98400	HOLDER, shear pin	-	1	D:15φ
25	37101-93301	CAP, engine lower	1	1	

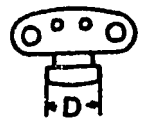


FIG.1

K - 3

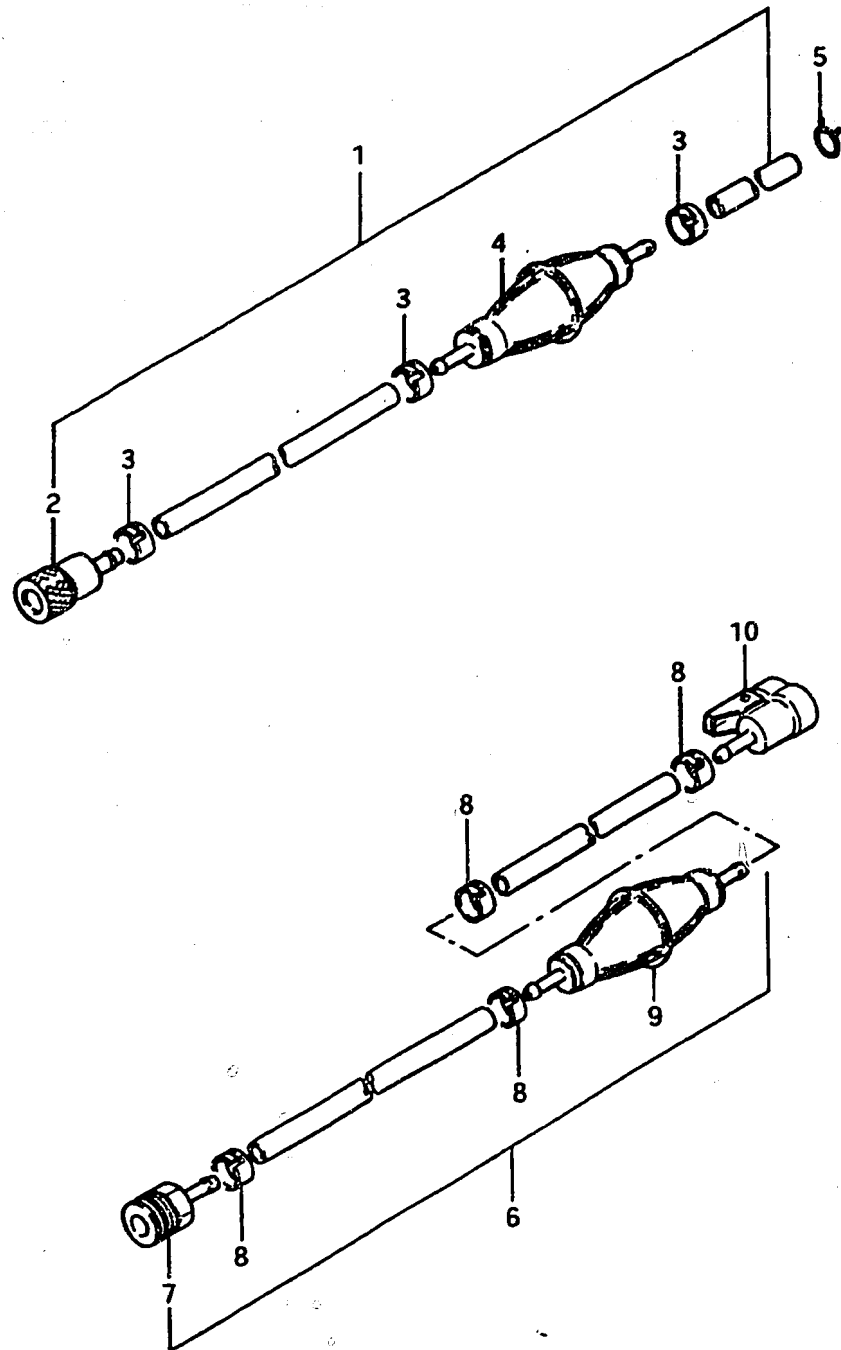


FIG.1 FUEL HOSE

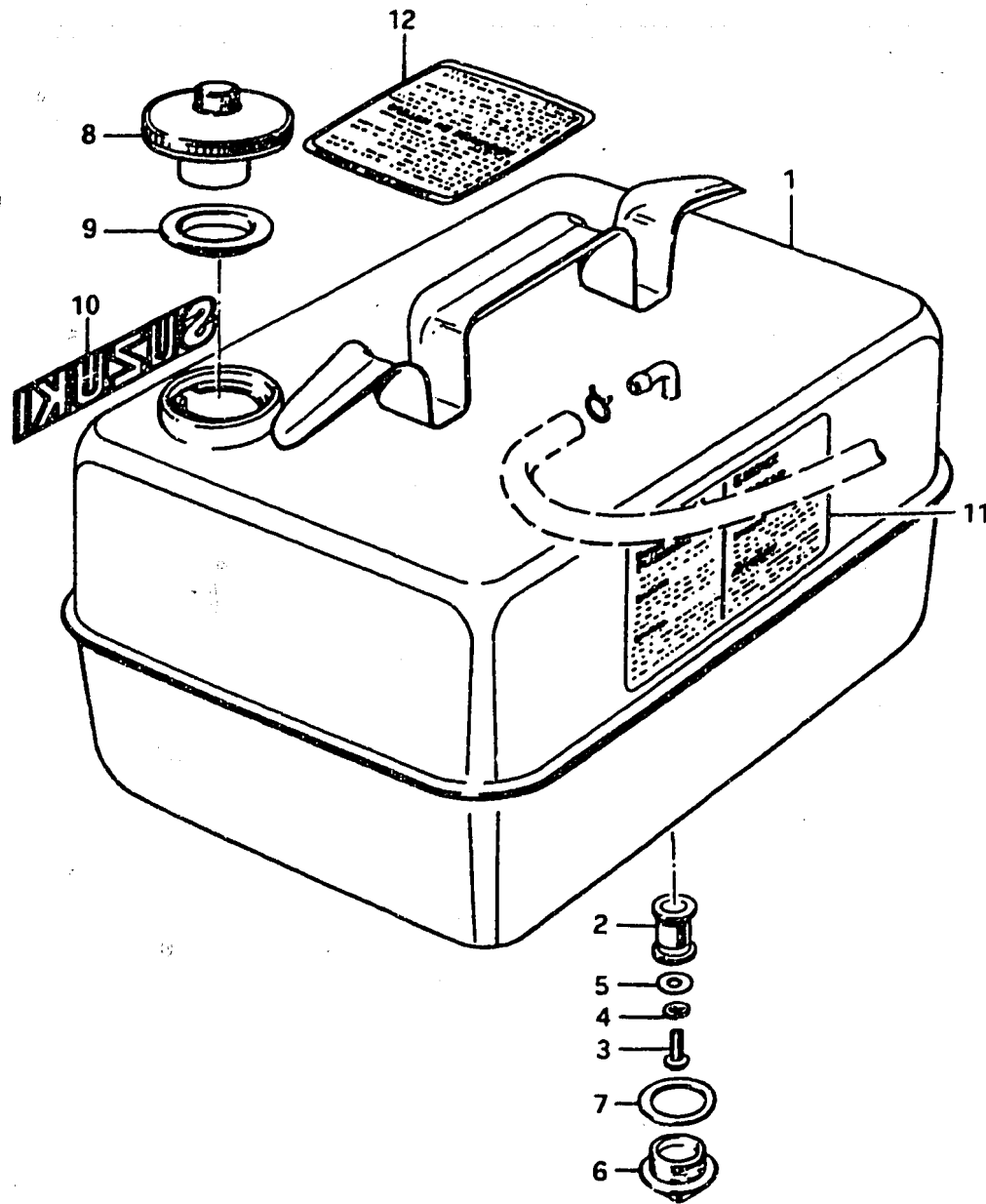
Ref. No.	Part No.	Description	Q'ty		Remarks
			D	F	
(DT5DE1, DT3.5FE16, DT5FE1, DT7.5FE1, DT9FE1)					
1-1	65700-98500	HOSE ASSY, fuel	1	1	to 65700-98501
1-2	65700-98501	HOSE ASSY, fuel	-	1	to 65700-98502
1-3	65700-98502	HOSE ASSY, fuel	-	1	to 65700-98503
1-4	65700-98503	HOSE ASSY, fuel	-	1	
1-5	65700-98992	HOSE ASSY, fuel	-	1	from 65700-98503
2-1	65750-98500	•SOCKET	1	1	to 65750-98501
2-2	65750-98501	•SOCKET	-	1	to 65750-98502
2-3	65750-98502	•SOCKET	-	1	
2-4	65750-98990	•SOCKET	-	1	from 65750-98502 to 65750-98505
3	09401-13402	•CLIP	3	3	
4-1	65770-99700	•PUMP, squeeze	1	1	to 65770-99701
4-2	65770-99701	•PUMP, squeeze	-	1	to 65770-99702
4-3	65770-99702	•PUMP, swuesze	-	1	
5	09401-11402	CLIP	1	1	
6-1	65700-98510	HOSE ASSY, fuel	1	1	to 65700-98511
6-2	65700-98511	HOSE ASSY, fuel	-	1	to 65700-98512
6-3	65700-98512	HOSE ASSY, fuel	-	1	to 65700-98513
6-4	65700-98513	HOSE ASSY, fuel	-	1	
6-5	65700-98990	HOSE ASSY, fuel	-	1	from 65700-98513 to 65700-95991
7-1	65750-98500	•SOCKET	1	1	to 65750-98501
7-2	65750-98501	•SOCKET	-	1	to 65750-98502
7-3	65750-98502	•SOCKET	-	1	E13
7-4	65750-98990	•SOCKET	-	1	from 65750-98502 to 65750-98505
8	09401-13402	•CLIP	4	4	
9-1	65770-99700	•PUMP, squeeze	1	1	to 65770-99701
9-2	65770-99701	•PUMP, squeeze	-	1	to 65770-99701
9-3	65770-99702	•PUMP, squeeze	-	1	
10	65750-99700	•SOCKET	1	1	



FIG.2

**K - 4**

FIG.2 FUEL TANK (OLD TYPE / DT5D)

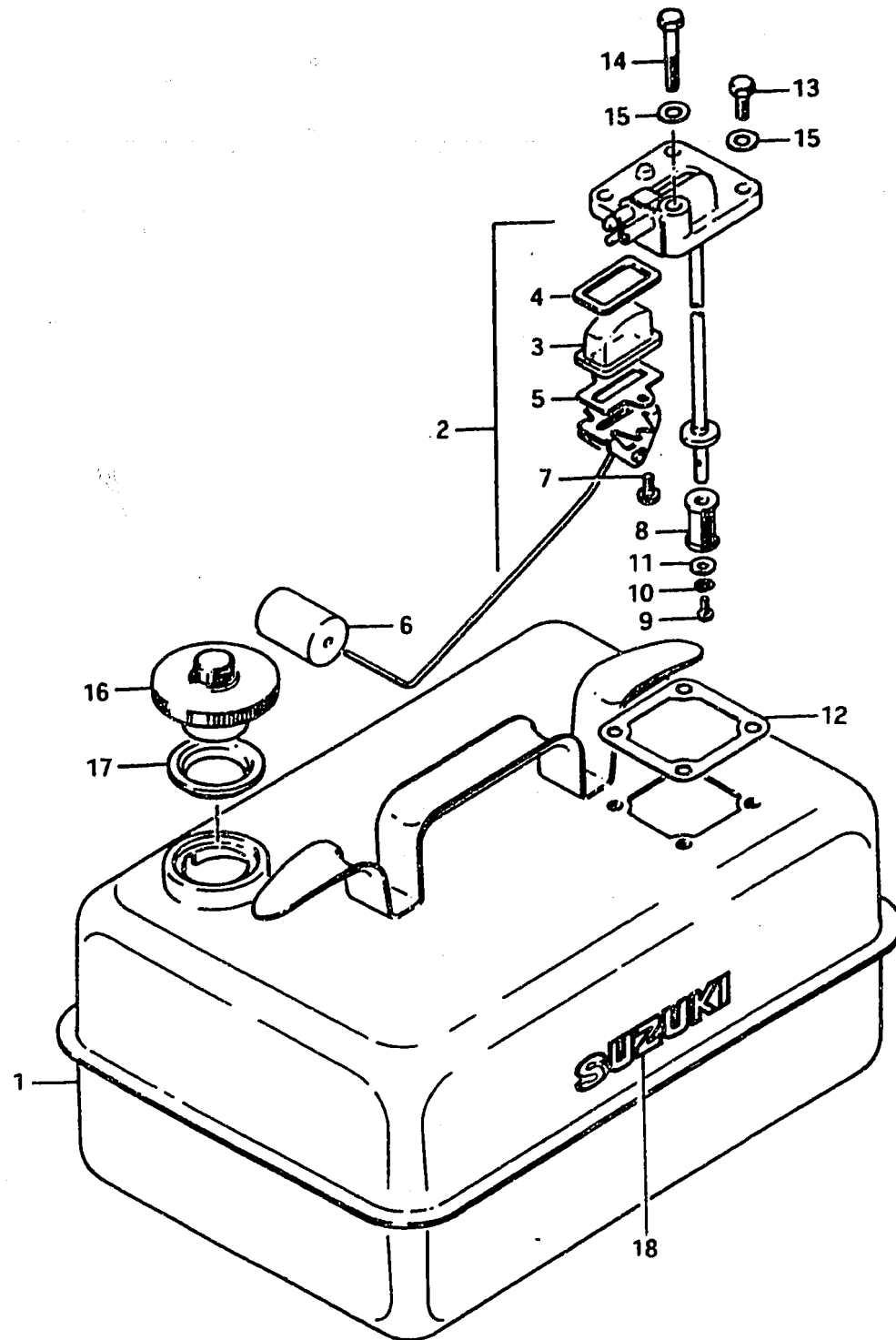


Ref. No.	Part No.	Description	Q'ty	Remarks
1	65800-98820	TANK SET (15ℓ) (4 U.S.GAL.) (3.3 IMP.GAL.)	1	to 65800-98821
2	65830-93301	•FILTER	1	
3	02112-05088	•SCREW	1	
4	08321-21058	•LOCK WASHER	1	
5	08322-21058	•WASHER	1	
6	09247-25001	•PLUG, fuel drain	1	
7	09168-25002	•GASKET, drain plug	1	
8	65510-96000	•CAP, fuel tank	1	
9	44248-12000	•GASKET, tank cap	1	
10	61441-98500	•EMBLEM, tank side	1	
11	65316-93300	•MARK, fuel caution	1	to 65316-93301
12	61511-93602	MARK, starter indicate	1	

FIG.3

K - 5

FIG.3 FUEL TANK (OLD TYPE / DT5DE13)



Q'ty

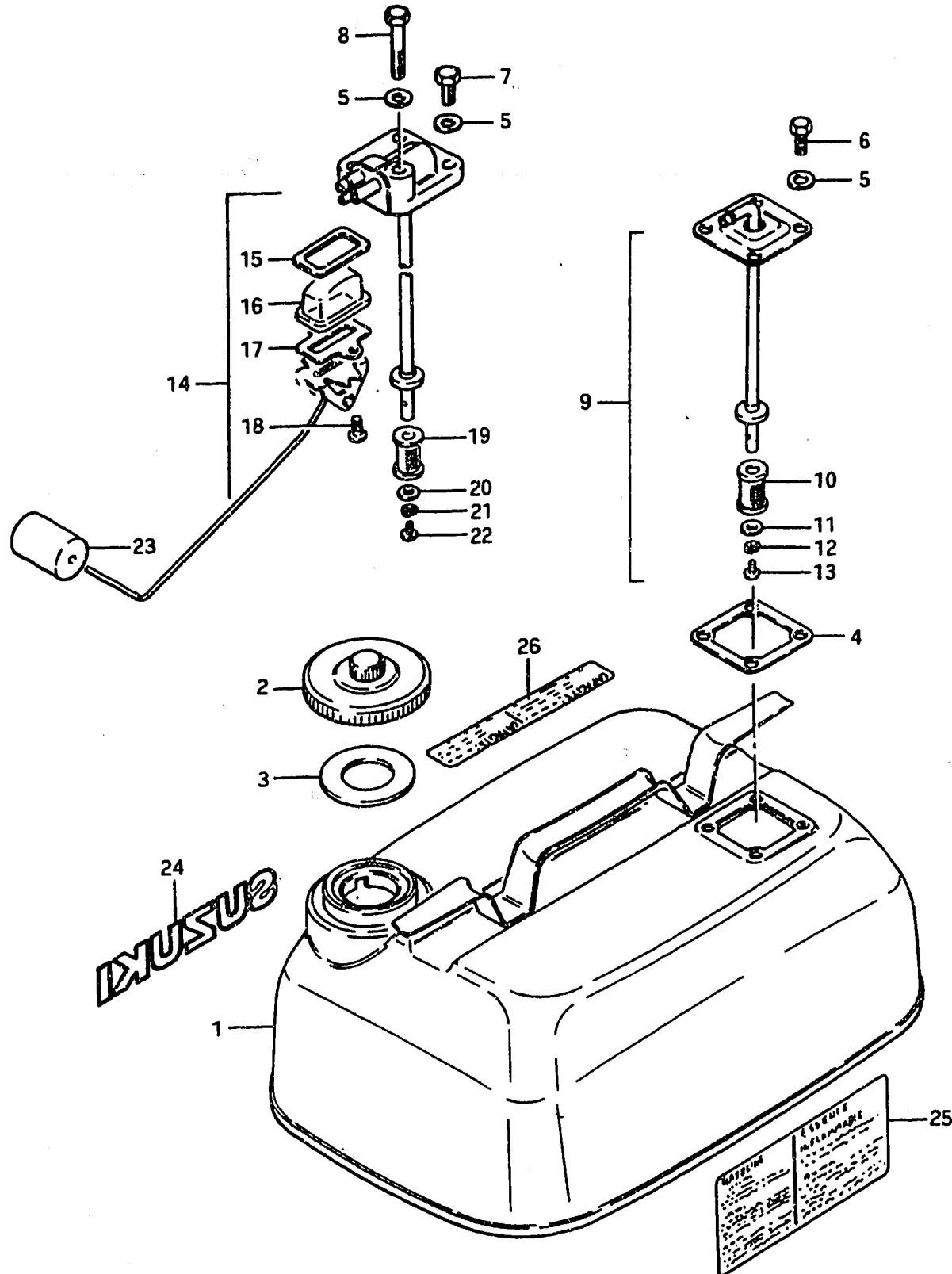
Ref. No.	Part No.	Description	D	Remarks
1	65800-98830	TANK SET (15ℓ) (4 U.S.GAL.) (3.3 IMP.GAL.) to (65800-98842)+(65850-98500)	1	
2	65850-99701	•GAUGE ASSY, fuel	1	
3	65853-93001	••STRAINER, fuel gauge	1	
4	65854-93000	••GASKET, strainer	1	to 65854-93001
5	65862-93000	••GASKET, float arm holder	1	
6	65864-93000	••FLOAT	1	
7	02112-04108	••SCREW	2	
8	65830-93301	••FILTER	1	
9	02112-05088	••SCREW	1	
10	08321-21058	••LOCK WASHER	1	
11	08322-21058	••WASHER	1	
12	65871-93001	•GASKET, fuel gauge	1	
13	01107-06168	•BOLT	3	
14	01107-06408	•BOLT	1	
15	08322-11068	•WASHER	4	
16	65510-96000	•CAP, fuel tank	1	
17	44248-12000	•GASKET, tank cap	1	
18	61441-98500	•EMBLEM, fuel tank	2	

FIG.7

**K - 9**

7

FIG.7 FUEL TANK (NEW TYPE)

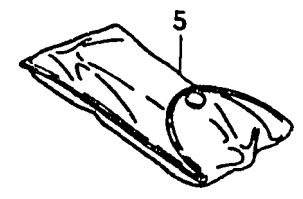
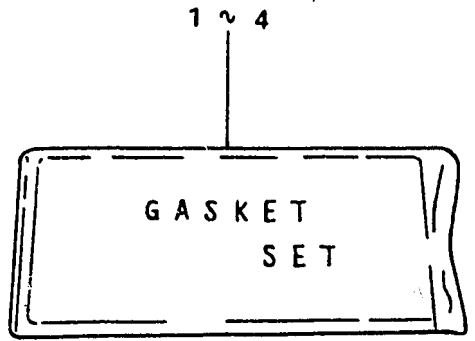


Ref. No.	Part No.	Description	Q'ty	Remarks
(DT3.5FE16, DT5FE1 OPT, DT7.5FE1, DT9FE1)				
1	65800-98840	TANK SET (15ℓ) (4 U.S.GAL.) (3.3 IMP.GAL) to (65800-98841)+(61441-98500)+(65316-93301)	1	
2-1	65510-98500	•CAP ASSY	1	to 65510-98501
2-2	65510-98501	•CAP ASSY	1	to 65510-98502
2-3	65510-98502	•CAP ASSY	1	to 65510-98503
3-1	65561-98500	•GASKET	1	to 65561-98501
3-2	65561-98501	•GASKET	1	
4	65871-93001	•GASKET, fuel gauge	1	
5	08322-21068	•WASHER	4	
6	01107-06168	•BOLT	4	
7	01107-06168	•BOLT	3	DT5FE13,DT7.5FE13
8	01107-06408	•BOLT	1	
9	65880-98500	OUTLET, separate tank	1	
10	65830-93301	•FILTER	1	
11	08322-21058	•WASHER	1	
12	08321-21058	•LOCK WASHER	1	
13	02112-05088	•SCREW	1	
14-1	65850-98500	GAUGE ASSY, fuel	1	to 65850-98501
14-2	65850-98501	GAUGE ASSY, fuel	1	
15-1	65854-93000	•GASKET	1	to 65854-93001
15-2	65854-93001	•GASKET	1	
16	65853-93001	•STRAINER	1	
17	65862-93000	•GASKET, arm holder	1	DT5FE13,DT7.5FE13
18	02112-04108	•SCREW	2	
19	65830-93301	•FILTER	1	
20	08322-21058	•WASHER	1	
21	08321-21058	•LOCK WASHER	1	
22	02112-05088	•SCREW	1	
23	65864-93000	•FLOAT	1	
24	61441-98500	EMBLEM, side	1	
25-1	65316-93300	MARK, fuel caution	1	to 65316-93301
25-2	65316-93301	MARK, fuel caution	1	to 65316-93302
25-3	65316-93302	MARK, fuel caution	1	to 65316-93303
26	65317-98500	MARK, fuel capacity	1	

FIG.9

**K - 11**

FIG.9 OPT : GASKET / TOOL SET



Ref. No.	Part No.	Description	Q'ty	Remarks
1	11400-98840	GASKET SET (ENGINE)	1	DT3.5
2	11400-98820	GASKET SET (ENGINE)	1	DT4,DT4.5
3-1	11400-98830	GASKET SET (ENGINE)	1	DT5D,to 11400-98831
3-2	11400-98832	GASKET SET (ENGINE)	1	DT5F to 11400-98833
3-3	11400-98833	GASKET SET (ENGINE)	1	
4	11400-96820	GASKET SET (ENGINE)	1	DT7.5,DT9 to 11400-96821
5-1	09800-00128	TOOL SET (DT3.5~DT9)	1	to 09800-00805
5-2	09800-00178	TOOL SET (DT2)	1	to 09800-00805

FIG.10

K - 12

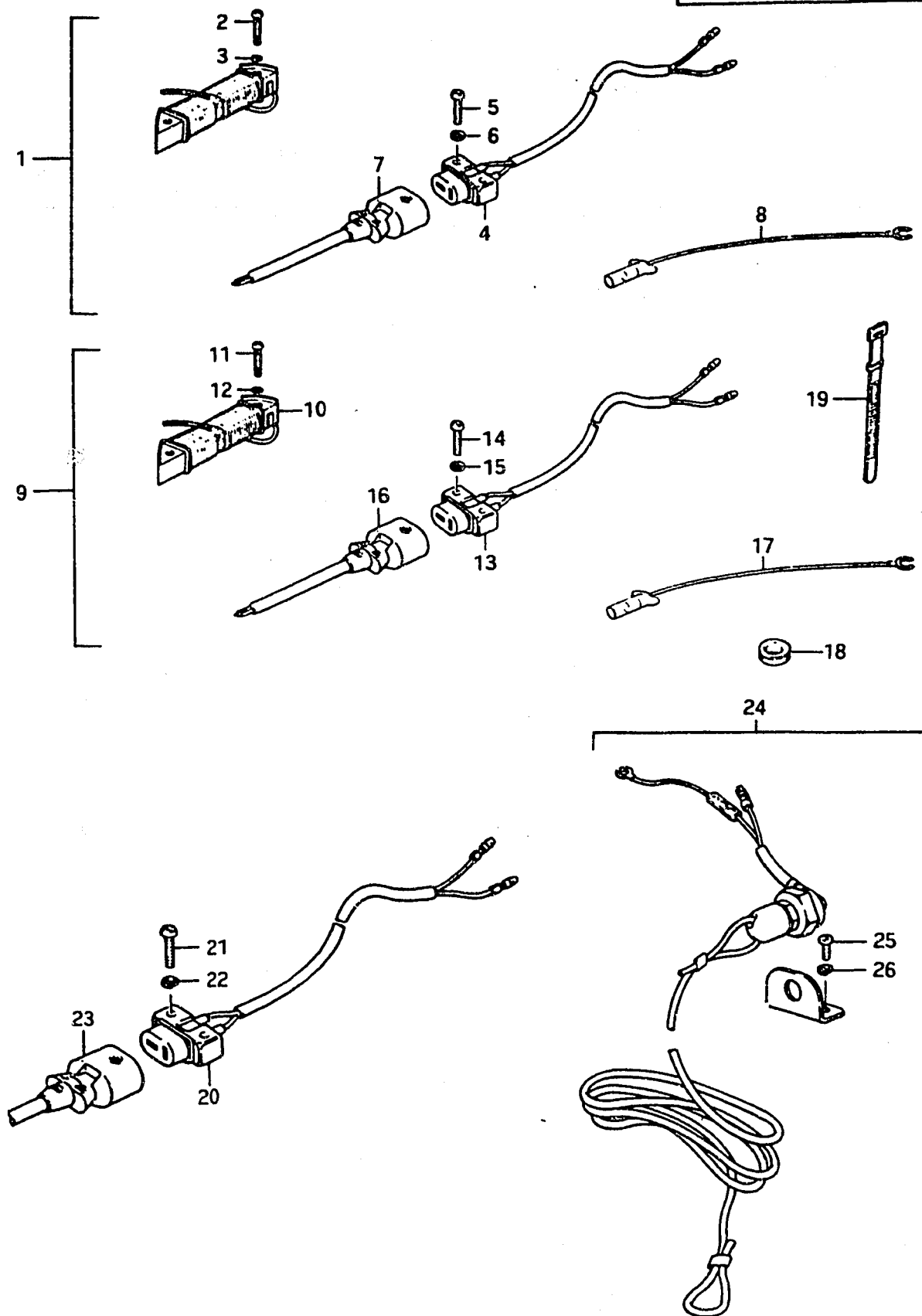
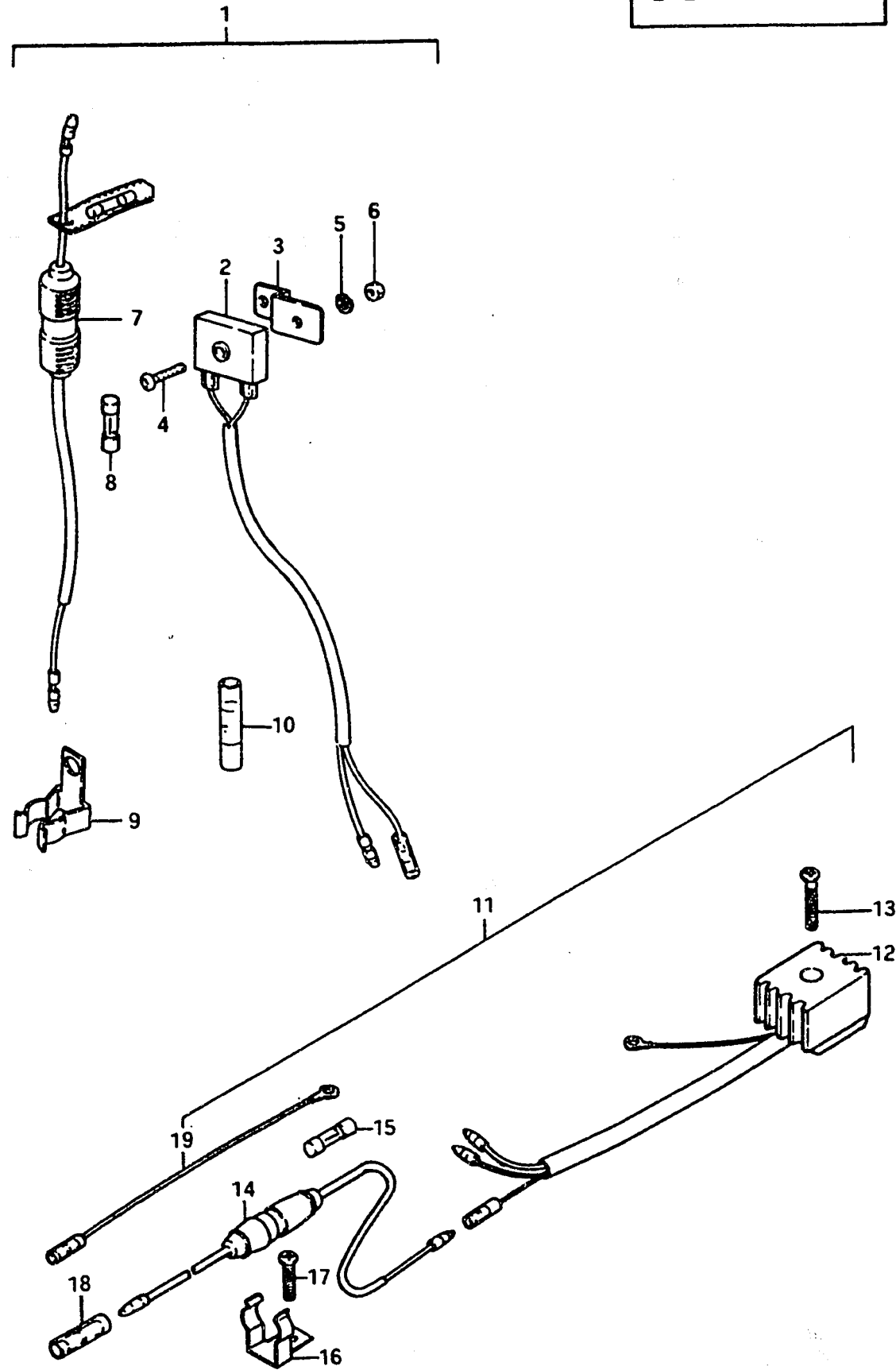


FIG.10 OPT : LIGHTING COIL, EMERGENCY SWITCH

Ref. No.	Part No.	Description	Q'ty	Remarks
1	32200-98821	COIL SET, lighting to (32200-98300)+(39600-98300)	1	DT2 DT3.5 DT4,DT4.5
2	02112-05258	•SCREW	2	
3	08321-21058	•LOCK WASHER	2	
4	39601-96711	•SOCKET ASSY	1	
5	02112-04208	•SCREW	2	
6	08322-21048	•WASHER	2	
7	39602-99711	•PLUG ASSY, lighting	1	
8	36898-93300	•LEAD WIRE, earth	1	
9	32200-98832	COIL SET, lighting	1	DT5
10	32120-98520	•COIL, lighting	1	
11	02112-06258	•SCREW	2	
12	08321-21068	•LOCK WASHER	2	
13	39601-96711	•SOCKET ASSY	1	
14	02112-04258	•SCREW	2	
15	08322-21048	•WASHER	2	
16	39602-99711	•PLUG, lighting	1	
17	36898-93300	•LEAD WIRE, earth	1	
18	09308-10002	•GROMMET, lead wire	1	
19	09407-12402	•CLAMP, lead wire	1	DT7.5,DT9
20	39601-96711	•SOCKET ASSY	1	
21	02112-04208	•SCREW	2	
22	08322-21048	•WASHER	2	
23	39602-99711	•PLUG, lighting	1	DT2~DT9
24-1	37800-93812	SWITCH SET, emergency from 37800-93811	1	
24-2	37800-93813	SWITCH SET, emergency from 37800-93812	1	DT2~DT9
25	09125-04011	•SCREW	2	
26	09162-04002	•LOCK WASHER	2	

FIG. 11

**K - 13**



11

FIG. 11 OPT : RECTIFIRE

Ref. No.	Part No.	Description	Q'ty 3.5~9	Remarks
1-1	32800-98810	RECTIFIRE SET	1	to 32800-98811
1-2	32800-98811	RECTIFIRE SET	1	
2	32800-95220	•RECTIFIRE ASSY	1	to 32801-98300
3	32890-98000	•STAY, rectifire	1	
4	02112-05208	•SCREW	1	DT3.5
5	08321-21058	•LOCK WASHER	1	
6	08310-11058	•NUT	1	DT5
7	36740-95252	•CASE ASSY, fuse from 36740-95251	1	
8	09481-20001	••FUSE (20A)	1	to 32800-96811
9	36791-95200	•HOLDER, fuse case	1	
10	37132-93700	•CONNECTOR	1	DT7.5,DT9
11-1	32800-96810	RECTIFIRE SET	1	
11-2	32800-96811	RECTIFIRE SET	1	DT7.5,DT9
12	32800-95720	•RECTIFIRE ASSY	1	
13	02112-05258	•SCREW	1	DT7.5,DT9
14	36740-95252	•CASE ASSY, fuse from 36740-95251	1	
15	09481-20001	••FUSE (20A)	1	DT7.5,DT9
16	36791-95200	•HOLDER, fuse case	1	
17	09125-06020	•SCREW, fuse case	1	DT7.5,DT9
18	37132-93700	•CONNECTOR	1	
19	36898-93300	•LEAD WIRE, earth	1	

DT2~DT9

DT2~DT9

FIG.12

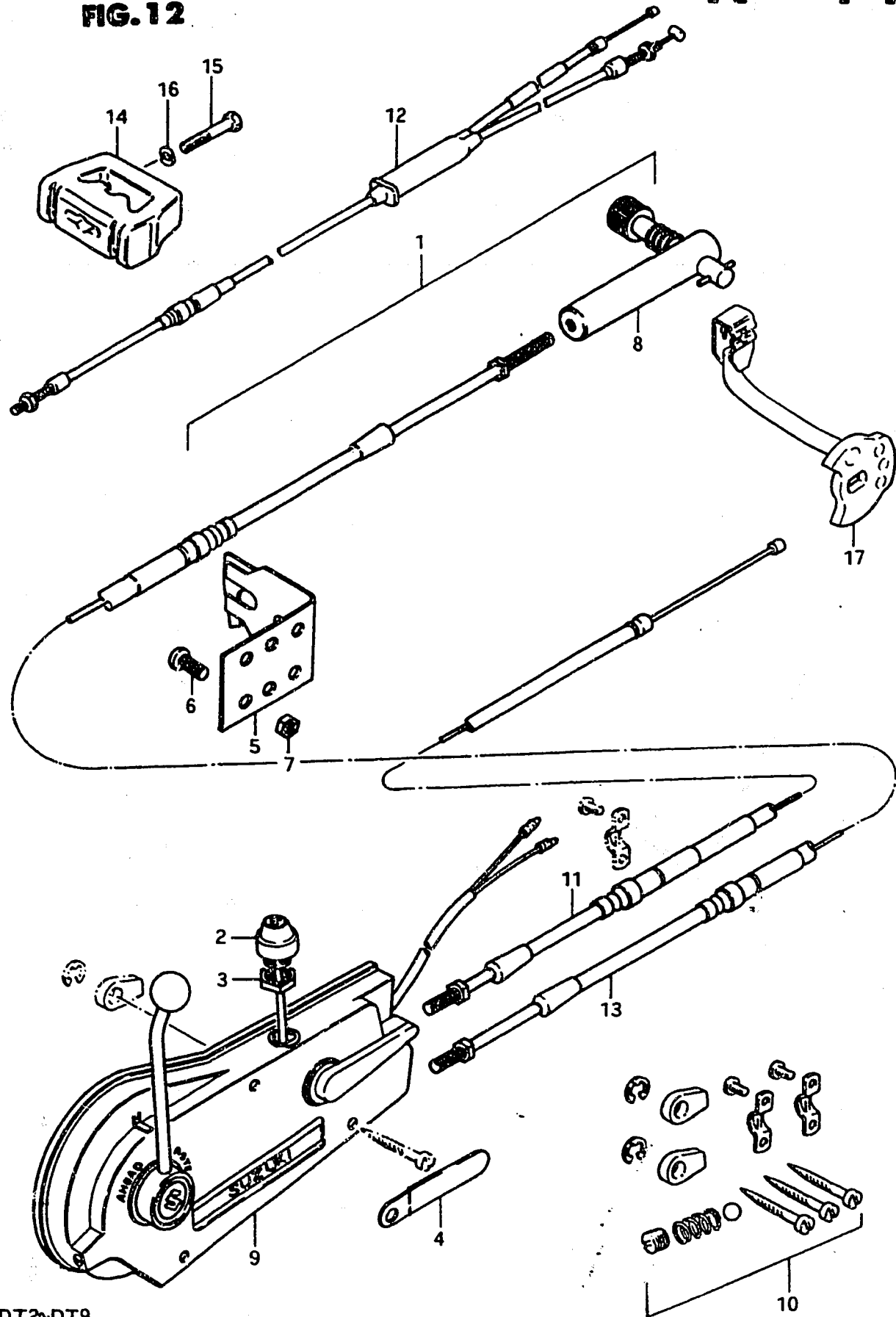


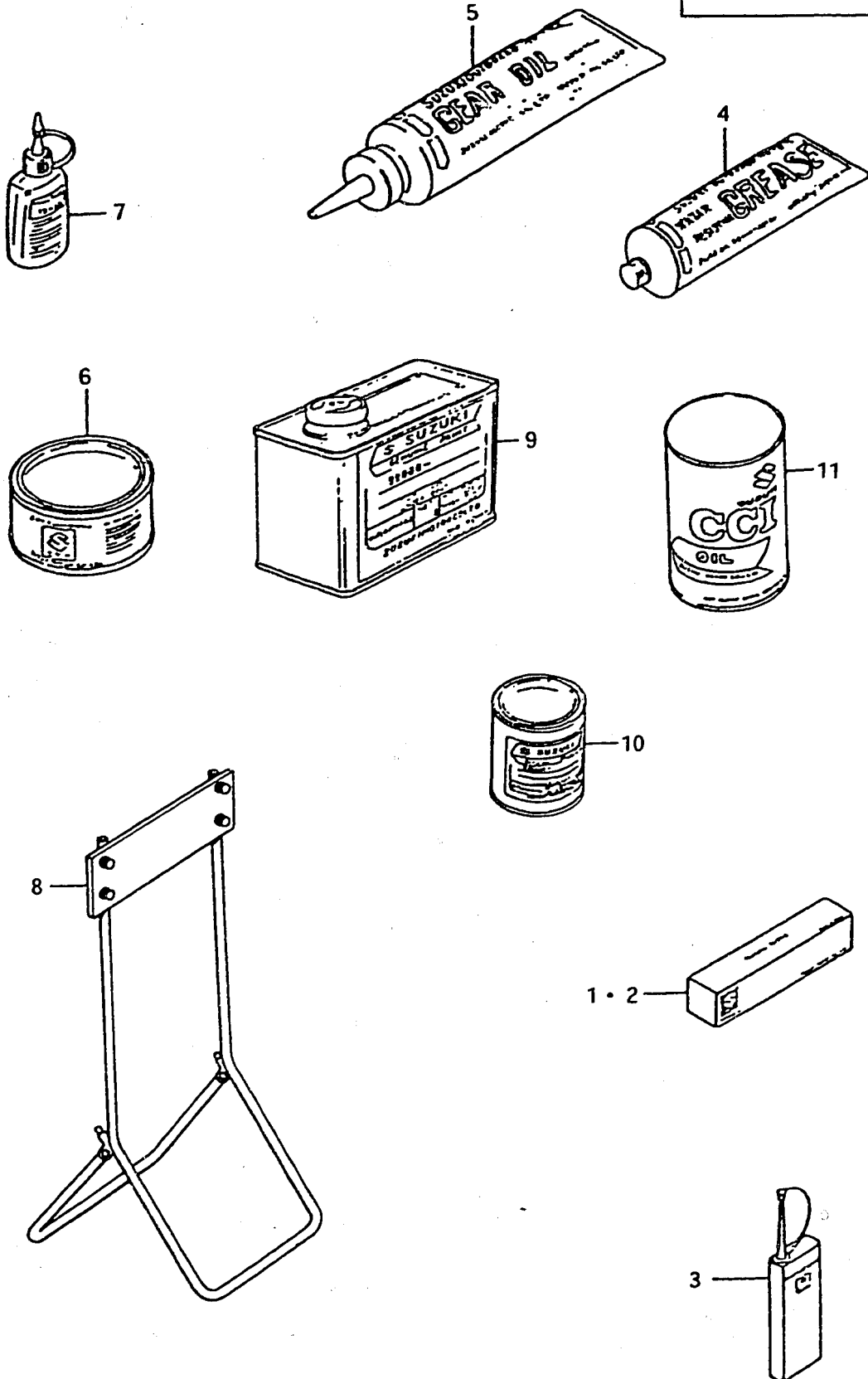
FIG.12 OPT : REMOTE CONTROL (DT5 D/F, DT7.5)

Ref. No.	Part No.	Description	Q'ty			Remarks
			C	D	F	
1-1	67130-93200	REMOTE CONTROL PARTS	1	1	1	to 67130-93201
1-2	67130-93201	REMOTE CONTROL PARTS	-	-	1	to 67130-93202
2-1	37870-93703	·SWITCH ASSY, engine stop	1	-	-	to 37870-93704
2-2	37870-93704	·SWITCH ASSY, engine stop	-	1	1	
3	09140-14014	·NUT	1	1	1	
4	09404-06401	·CLAMP	1	1	1	
5	67345-93701	·STOPPER, remote control cable	1	1	1	
6	09125-05028	·SCREW	2	2	2	
7	09140-05001	·NUT	2	2	2	
8	67440-93701	·GUIDE, clutch cable	1	1	1	
9-1	67200-93200	REMOTE CONTROL BOX ASSY	1	1	1	to 67200-93201
9-2	67200-93201	REMOTE CONTROL BOX ASSY	-	-	1	DT5 (D,F) DT7.5
10	67300-95810	·HOLDER SET, control cable	1	1	1	
11-1	67310-93600	CABLE ASSY, throttle	1	1	1	2.5M
11-2	67310-93610	CABLE ASSY, throttle	1	1	1	3.0M
11-3	67310-93620	CABLE ASSY, throttle	1	1	1	3.5M
11-4	67310-93630	CABLE ASSY, throttle	1	1	1	4.0M
11-5	67310-93640	CABLE ASSY, throttle	1	1	1	4.5M
11-6	67310-93650	CABLE ASSY, throttle	1	1	1	5.0M
12-1	67310-98500	CABLE ASSY, throttle	-	1	1	2.5M
12-2	67310-98510	CABLE ASSY, throttle	-	1	1	3.0M
12-3	67310-98520	CABLE ASSY, throttle	-	1	1	3.5M
12-4	67310-98530	CABLE ASSY, throttle	-	1	1	4.0M
12-5	67310-98540	CABLE ASSY, throttle	-	1	1	4.5M
12-6	67310-98550	CABLE ASSY, throttle	-	1	1	5.0M
13-1	67320-95750	CABLE ASSY, clutch	1	1	1	2.5M
13-2	67320-95740	CABLE ASSY, clutch	1	1	1	3.0M
13-3	67320-95730	CABLE ASSY, clutch	1	1	1	3.5M
13-4	67320-95720	CABLE ASSY, clutch	1	1	1	4.0M
13-5	67320-95710	CABLE ASSY, clutch	1	1	1	4.5M
13-6	67320-95200	CABLE ASSY, clutch	1	1	1	5.0M
14	67112-39700-01J	HOLDER, remote control	1	1	1	
15	09100-06049	BOLT	2	2	2	
16	09162-06001	LOCK WASHER	2	2	2	
17	67450-98500	LEVER, clutch	-	1	1	DT5

FIG.14 OPTIONAL

FIG.14

L - 2



Ref. No.	Part No.	Description	Q'ty	Remarks
1	99000-31030	GASKET, liquid	1	for crankcase,100g
2	99000-31050	GASKET, liquid	1	for gear case,100g
3	99000-32040	CEMENT, thread lock	1	200g
4-1	99000-25160	GREASE, water resistant	1	250g
4-2	99000-25170	GREASE, water resistant	1	50g
5	99000-22540	GEAR OIL, outboard motor	1	400cc
6	99000-25010	SUZUKI SUPER GREASE A	1	450g,for crank oil seal
7	99000-32030	SUZUKI LOCK SUPER	1	50g (1303B)
8	09914-39911	HANGER, engine	1	
9-1	99000-10105-01T	PAINT (500g)	1	
9-2	99000-10205-01J	PAINT (500g)	1	
10-1	99000-10109-01T	PAINT (90g)	1	
10-2	99000-10209-01J	PAINT (90g)	1	
11-1	99000-21460	CCI OIL (1ℓx24,Mitsubishi)	1	
11-2	99000-21145	CCI OIL (1ℓx24,Shell)	1	
11-3	99000-21021	CCI OIL (4ℓx6)	1	
11-4	99000-21150	CCI OIL (200ℓ)	1	
11-5	99000-21250	CCI SUPER OIL (1ℓx24)	1	
11-6	99000-21260	CCI SUPER OIL (4ℓx6)	1	